

Datasheet for ABIN2791033
anti-GPR162 antibody (N-Term)[Go to Product page](#)

1 Image

Overview

Quantity:	100 µL
Target:	GPR162
Binding Specificity:	N-Term
Reactivity:	Human, Mouse, Rat, Dog, Horse, Pig, Cow, Rabbit, Zebrafish (Danio rerio)
Host:	Rabbit
Clonality:	Polyclonal
Conjugate:	This GPR162 antibody is un-conjugated
Application:	Western Blotting (WB)

Product Details

Immunogen:	The immunogen is a synthetic peptide directed towards the N-terminal region of Human GPR162
Sequence:	ILSISAKQK HKPLELLLCF LAGTHILMAA VPLTTFVAVQ LRRQASSDYD
Predicted Reactivity:	Cow: 100%, Dog: 100%, Horse: 100%, Human: 100%, Mouse: 100%, Pig: 100%, Rabbit: 79%, Rat: 100%, Zebrafish: 79%
Characteristics:	This is a rabbit polyclonal antibody against GPR162. It was validated on Western Blot.
Purification:	Affinity Purified

Target Details

Target:	GPR162
---------	--------

Target Details

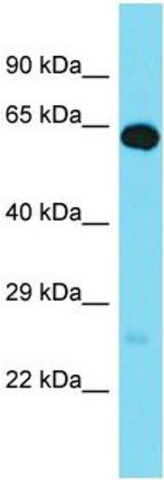
Alternative Name:	GPR162 (GPR162 Products)
Background:	<p>This gene was identified upon genomic analysis of a gene-dense region at human chromosome 12p13. It appears to be mainly expressed in the brain, however, its function is not known.</p> <p>Alternatively spliced transcript variants encoding different isoforms have been identified.</p> <p>Alias Symbols: A-2, GRCA</p> <p>Protein Size: 588</p>
Molecular Weight:	65 kDa
Gene ID:	27239
NCBI Accession:	NM_019858 , NP_062832
UniProt:	Q16538

Application Details

Application Notes:	Optimal working dilutions should be determined experimentally by the investigator.
Comment:	Antigen size: 588 AA
Restrictions:	For Research Use only

Handling

Format:	Liquid
Concentration:	Lot specific
Buffer:	Liquid. Purified antibody supplied in 1x PBS buffer with 0.09 % (w/v) sodium azide and 2 % sucrose.
Preservative:	Sodium azide
Precaution of Use:	This product contains Sodium azide: a POISONOUS AND HAZARDOUS SUBSTANCE which should be handled by trained staff only.
Handling Advice:	Avoid repeated freeze-thaw cycles.
Storage:	-20 °C
Storage Comment:	For short term use, store at 2-8°C up to 1 week. For long term storage, store at -20°C in small aliquots to prevent freeze-thaw cycles.



Western Blotting

Image 1. Host: Rabbit Target Name: GPR162 Sample Type: Fetal Brain lysates Antibody Dilution: 1.0ug/ml