

Datasheet for ABIN2791034
anti-GPR173 antibody (C-Term)



[Go to Product page](#)

1 Image

Overview

Quantity:	100 µL
Target:	GPR173
Binding Specificity:	C-Term
Reactivity:	Human, Mouse, Rat, Cow, Dog, Rabbit, Guinea Pig, Zebrafish (Danio rerio)
Host:	Rabbit
Clonality:	Polyclonal
Conjugate:	This GPR173 antibody is un-conjugated
Application:	Western Blotting (WB)

Product Details

Immunogen:	The immunogen is a synthetic peptide directed towards the C-terminal region of Human GPR173
Sequence:	IRQNGHAASR RLLGMDEVKG EKQLGRMFYA ITLLFLLLWS PYIVACYWRV
Predicted Reactivity:	Cow: 100%, Dog: 100%, Guinea Pig: 100%, Human: 100%, Mouse: 100%, Rabbit: 100%, Rat: 100%, Zebrafish: 79%
Characteristics:	This is a rabbit polyclonal antibody against GPR173. It was validated on Western Blot.
Purification:	Affinity Purified

Target Details

Target:	GPR173
---------	--------

Target Details

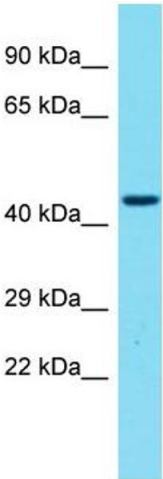
Alternative Name:	GPR173 (GPR173 Products)
Background:	<p>This gene encodes a member of the G-protein coupled receptor 1 family. This protein contains 7 transmembrane domains and conserved cysteine residues.</p> <p>Alias Symbols: SREB3</p> <p>Protein Size: 373</p>
Molecular Weight:	41 kDa
Gene ID:	54328
NCBI Accession:	NM_018969 , NP_061842
UniProt:	Q9NS66

Application Details

Application Notes:	Optimal working dilutions should be determined experimentally by the investigator.
Comment:	Antigen size: 373 AA
Restrictions:	For Research Use only

Handling

Format:	Liquid
Concentration:	Lot specific
Buffer:	Liquid. Purified antibody supplied in 1x PBS buffer with 0.09 % (w/v) sodium azide and 2 % sucrose.
Preservative:	Sodium azide
Precaution of Use:	This product contains Sodium azide: a POISONOUS AND HAZARDOUS SUBSTANCE which should be handled by trained staff only.
Handling Advice:	Avoid repeated freeze-thaw cycles.
Storage:	-20 °C
Storage Comment:	For short term use, store at 2-8°C up to 1 week. For long term storage, store at -20°C in small aliquots to prevent freeze-thaw cycles.



Western Blotting

Image 1. Host: Rabbit Target Name: GPR173 Sample Type: 721_B Whole Cell lysates Antibody Dilution: 1.0ug/ml
GPR173 is supported by BioGPS gene expression data to be expressed in 721_B