



[Go to Product page](#)

Datasheet for ABIN2791049

## anti-KIAA1919 antibody (Middle Region)

### 1 Image

#### Overview

Quantity:	100 µL
Target:	KIAA1919
Binding Specificity:	Middle Region
Reactivity:	Human, Cow
Host:	Rabbit
Clonality:	Polyclonal
Conjugate:	This KIAA1919 antibody is un-conjugated
Application:	Western Blotting (WB)

#### Product Details

Immunogen:	The immunogen is a synthetic peptide directed towards the middle region of Human KIAA1919
Sequence:	YAVIGTYMFL VSVIFFCLFL KNSSKQEKAR ASAETFRRAK YHNALLCLLF
Predicted Reactivity:	Cow: 86%, Human: 100%
Characteristics:	This is a rabbit polyclonal antibody against KIAA1919. It was validated on Western Blot.
Purification:	Affinity Purified

#### Target Details

Target:	KIAA1919
Alternative Name:	KIAA1919 ( <a href="#">KIAA1919 Products</a> )
Background:	KIAA1919 may function as a sodium-dependent glucose transporter.

## Target Details

---

Alias Symbols: MFSD4B, NaGLT1

Protein Size: 518

Molecular Weight: 57 kDa

Gene ID: 91749

NCBI Accession: [NM\\_153369](#), [NP\\_699200](#)

UniProt: [Q5TF39](#)

## Application Details

---

Application Notes: Optimal working dilutions should be determined experimentally by the investigator.

Comment: Antigen size: 518 AA

Restrictions: For Research Use only

## Handling

---

Format: Liquid

Concentration: Lot specific

Buffer: Liquid. Purified antibody supplied in 1x PBS buffer with 0.09 % (w/v) sodium azide and 2 % sucrose.

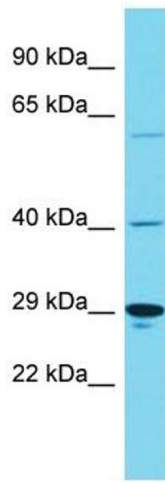
Preservative: Sodium azide

Precaution of Use: This product contains Sodium azide: a POISONOUS AND HAZARDOUS SUBSTANCE which should be handled by trained staff only.

Handling Advice: Avoid repeated freeze-thaw cycles.

Storage: -20 °C

Storage Comment: For short term use, store at 2-8°C up to 1 week. For long term storage, store at -20°C in small aliquots to prevent freeze-thaw cycles.



### Western Blotting

**Image 1.** Host: Rabbit Target Name: KIAA1919 Sample Type: Hela Whole Cell lysates Antibody Dilution: 1.0ug/ml