



[Go to Product page](#)

Datasheet for ABIN2791051

## anti-KRT38 antibody (Middle Region)

### 1 Image

#### Overview

|                      |   |
|----------------------|---|
| Quantity:            | 100 µL  |
| Target:              | KRT38   |
| Binding Specificity: | Middle Region                                   |
| Reactivity:          | Human, Horse, Rabbit, Cow, Dog, Pig, Rat, Sheep |
| Host:                | Rabbit  |
| Clonality:           | Polyclonal                                      |
| Conjugate:           | This KRT38 antibody is un-conjugated            |
| Application:         | Western Blotting (WB)                           |

#### Product Details

|                       |   |
|-----------------------|---|
| Immunogen:            | The immunogen is a synthetic peptide directed towards the middle region of Human KRT38    |
| Sequence:             | DKCGTQKLLD DATLAKADLE AQQESLKEEQ LSLKSNHEQE VKILRSQLGE                                    |
| Predicted Reactivity: | Cow: 92%, Dog: 85%, Horse: 85%, Human: 100%, Pig: 77%, Rabbit: 100%, Rat: 77%, Sheep: 92% |
| Characteristics:      | This is a rabbit polyclonal antibody against KRT38. It was validated on Western Blot.     |
| Purification:         | Affinity Purified   |

#### Target Details

|                   |   |
|-------------------|---|
| Target:           | KRT38   |
| Alternative Name: | KRT38 ( <a href="#">KRT38 Products</a> )  |
| Background:       | The protein encoded by this gene is a member of the keratin gene family. As a type I hair |

## Target Details

---

keratin, it is an acidic protein which heterodimerizes with type II keratins to form hair and nails. The type I hair keratins are clustered in a region of chromosome 17q12-q21 and have the same direction of transcription.

Alias Symbols: HA8, KRTHA8, hHa8

Protein Interaction Partner: KRT83, KRT81, KRT8, KRT6B, KRT6A, KRT5, KRT4, KRT2, HOXA1, GNG10, KLHL38, KRT79, KRT6C, CEP57L1, TXLNA, TXLNB, ZNF417, C1orf216, HAUS1, KRT71, ZNF587, ANKRD36BP1, BEX2, USHBP1, TXNDC5, C19orf57, ZFYVE21, SCN1, RHPN1-AS1, CCDC146, FAM90A1, AMOTL2, KDM1A,

Protein Size: 456

---

Molecular Weight: 50 kDa

---

Gene ID: 8687

---

NCBI Accession: [NM\\_006771](#), [NP\\_006762](#)

---

UniProt: [O76015](#)

## Application Details

---

Application Notes: Optimal working dilutions should be determined experimentally by the investigator.

---

Comment: Antigen size: 456 AA

---

Restrictions: For Research Use only

## Handling

---

Format: Liquid

---

Concentration: Lot specific

---

Buffer: Liquid. Purified antibody supplied in 1x PBS buffer with 0.09 % (w/v) sodium azide and 2 % sucrose.

---

Preservative: Sodium azide

---

Precaution of Use: This product contains Sodium azide: a POISONOUS AND HAZARDOUS SUBSTANCE which should be handled by trained staff only.

---

Handling Advice: Avoid repeated freeze-thaw cycles.

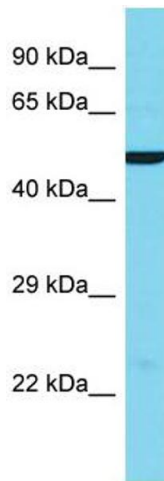
---

Storage: -20 °C

---

Storage Comment: For short term use, store at 2-8°C up to 1 week. For long term storage, store at -20°C in small

aliquots to prevent freeze-thaw cycles.



#### Western Blotting

**Image 1.** Host: Rabbit Target Name: KRT38 Sample Type: HeLa Whole Cell lysates Antibody Dilution: 1.0ug/ml