



[Go to Product page](#)

Datasheet for ABIN2791052

anti-KRT38 antibody (N-Term)

1 Image

Overview

Quantity:	100 µL
Target:	KRT38
Binding Specificity:	N-Term
Reactivity:	Human, Horse, Rabbit
Host:	Rabbit
Clonality:	Polyclonal
Conjugate:	This KRT38 antibody is un-conjugated
Application:	Western Blotting (WB)

Product Details

Immunogen:	The immunogen is a synthetic peptide directed towards the N-terminal region of Human KRT38
Sequence:	AYGENTLNGH EKETMQFLND RLANYLEKVR QLEQENAELE ATLLERSKCH
Predicted Reactivity:	Horse: 77%, Human: 100%, Rabbit: 93%
Characteristics:	This is a rabbit polyclonal antibody against KRT38. It was validated on Western Blot.
Purification:	Affinity Purified

Target Details

Target:	KRT38
Alternative Name:	KRT38 (KRT38 Products)
Background:	The protein encoded by this gene is a member of the keratin gene family. As a type I hair

Target Details

keratin, it is an acidic protein which heterodimerizes with type II keratins to form hair and nails. The type I hair keratins are clustered in a region of chromosome 17q12-q21 and have the same direction of transcription.

Alias Symbols: HA8, KRTHA8, hHa8

Protein Interaction Partner: KRT83, KRT81, KRT8, KRT6B, KRT6A, KRT5, KRT4, KRT2, HOXA1, GNG10, KLHL38, KRT79, KRT6C, CEP57L1, TXLNA, TXLNB, ZNF417, C1orf216, HAUS1, KRT71, ZNF587, ANKRD36BP1, BEX2, USHBP1, TXNDC5, C19orf57, ZFYVE21, SCN1, RHPN1-AS1, CCDC146, FAM90A1, AMOTL2, KDM1A,

Protein Size: 456

Molecular Weight: 50 kDa

Gene ID: 8687

NCBI Accession: [NM_006771](#), [NP_006762](#)

UniProt: [O76015](#)

Application Details

Application Notes: Optimal working dilutions should be determined experimentally by the investigator.

Comment: Antigen size: 456 AA

Restrictions: For Research Use only

Handling

Format: Liquid

Concentration: Lot specific

Buffer: Liquid. Purified antibody supplied in 1x PBS buffer with 0.09 % (w/v) sodium azide and 2 % sucrose.

Preservative: Sodium azide

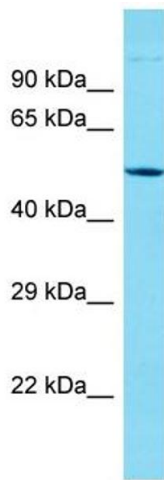
Precaution of Use: This product contains Sodium azide: a POISONOUS AND HAZARDOUS SUBSTANCE which should be handled by trained staff only.

Handling Advice: Avoid repeated freeze-thaw cycles.

Storage: -20 °C

Storage Comment: For short term use, store at 2-8°C up to 1 week. For long term storage, store at -20°C in small

aliquots to prevent freeze-thaw cycles.



Western Blotting

Image 1. Host: Rabbit Target Name: KRT38 Sample Type: Jurkat Whole Cell lysates Antibody Dilution: 1.0ug/ml