



[Go to Product page](#)

Datasheet for ABIN2791053
anti-KRT73 antibody (C-Term)

1 Image

Overview

Quantity:	100 µL
Target:	KRT73
Binding Specificity:	C-Term
Reactivity:	Human, Mouse, Rat, Cow, Dog
Host:	Rabbit
Clonality:	Polyclonal
Conjugate:	This KRT73 antibody is un-conjugated
Application:	Western Blotting (WB)

Product Details

Immunogen:	The immunogen is a synthetic peptide directed towards the C-terminal region of Human KRT73
Sequence:	YSMLPGGCVT GSGNCSPRGE ARTRLGSASE FRDSQGTKLA LSSPTKKTMR
Predicted Reactivity:	Cow: 92%, Dog: 86%, Human: 100%, Mouse: 85%, Rat: 93%
Characteristics:	This is a rabbit polyclonal antibody against KRT73. It was validated on Western Blot.
Purification:	Affinity Purified

Target Details

Target:	KRT73
Alternative Name:	KRT73 (KRT73 Products)
Background:	Keratins are intermediate filament proteins responsible for the structural integrity of epithelial

Target Details

cells and are subdivided into epithelial keratins and hair keratins. This gene encodes a protein that is expressed in the inner root sheath of hair follicles. The type II keratins are clustered in a region of chromosome 12q13.

Alias Symbols: IRT6IRS3, K6IRS3, KRT6IRS3

Protein Interaction Partner: KRT15, UBC, UBASH3B, INPPL1, GRB2, EPS15, CRK, AP2M1, UCHL5,

Protein Size: 540

Molecular Weight: 59 kDa

Gene ID: 319101

NCBI Accession: [NM_175068](#), [NP_778238](#)

UniProt: [Q86Y46](#)

Application Details

Application Notes: Optimal working dilutions should be determined experimentally by the investigator.

Comment: Antigen size: 540 AA

Restrictions: For Research Use only

Handling

Format: Liquid

Concentration: Lot specific

Buffer: Liquid. Purified antibody supplied in 1x PBS buffer with 0.09 % (w/v) sodium azide and 2 % sucrose.

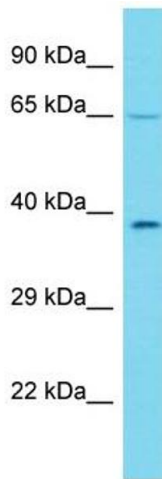
Preservative: Sodium azide

Precaution of Use: This product contains Sodium azide: a POISONOUS AND HAZARDOUS SUBSTANCE which should be handled by trained staff only.

Handling Advice: Avoid repeated freeze-thaw cycles.

Storage: -20 °C

Storage Comment: For short term use, store at 2-8°C up to 1 week. For long term storage, store at -20°C in small aliquots to prevent freeze-thaw cycles.



Western Blotting

Image 1. Host: Rabbit Target Name: KRT73 Sample Type: HepG2 Whole Cell lysates Antibody Dilution: 1.0ug/ml