

Datasheet for ABIN2791057
anti-LIN54 antibody (C-Term)[Go to Product page](#)

1 Image

Overview

Quantity:	100 µL
Target:	LIN54
Binding Specificity:	C-Term
Reactivity:	Human, Mouse, Rat, Dog, Cow, Rabbit, Guinea Pig, Horse, Zebrafish (Danio rerio)
Host:	Rabbit
Clonality:	Polyclonal
Conjugate:	This LIN54 antibody is un-conjugated
Application:	Western Blotting (WB)

Product Details

Immunogen:	The immunogen is a synthetic peptide directed towards the C-terminal region of Human LIN54
Sequence:	NPEAFKPKIG KGKEGESDRR HSKGCNCKRS GCLKNYCECY EAKIMCSSIC
Predicted Reactivity:	Cow: 100%, Dog: 100%, Guinea Pig: 100%, Horse: 100%, Human: 100%, Mouse: 100%, Rabbit: 100%, Rat: 100%, Zebrafish: 100%
Characteristics:	This is a rabbit polyclonal antibody against LIN54. It was validated on Western Blot.
Purification:	Affinity Purified

Target Details

Target:	LIN54
Alternative Name:	LIN54 (LIN54 Products)

Target Details

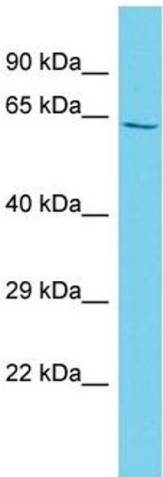
Background:	LIN54 is a component of the LIN, or DREAM, complex, an essential regulator of cell cycle genes. Alias Symbols: CXCDC1, JC8.6, MIP120 Protein Interaction Partner: RBL2, MYBL2, UBC, ELAVL1, LIN9, LIN52, LIN37, RBL1, RBBP4, E2F4, SUMO2, Lin54, TFDP2, TFDP1, MYBL1, RB1, Protein Size: 528
Molecular Weight:	58 kDa
Gene ID:	132660
NCBI Accession:	NM_001115007 , NP_001108479
Pathways:	Cell Division Cycle , Mitotic G1-G1/S Phases

Application Details

Application Notes:	Optimal working dilutions should be determined experimentally by the investigator.
Comment:	Antigen size: 528 AA
Restrictions:	For Research Use only

Handling

Format:	Liquid
Concentration:	Lot specific
Buffer:	Liquid. Purified antibody supplied in 1x PBS buffer with 0.09 % (w/v) sodium azide and 2 % sucrose.
Preservative:	Sodium azide
Precaution of Use:	This product contains Sodium azide: a POISONOUS AND HAZARDOUS SUBSTANCE which should be handled by trained staff only.
Handling Advice:	Avoid repeated freeze-thaw cycles.
Storage:	-20 °C
Storage Comment:	For short term use, store at 2-8°C up to 1 week. For long term storage, store at -20°C in small aliquots to prevent freeze-thaw cycles.



Western Blotting

Image 1. Host: Rabbit Target Name: LIN54 Sample Type: HT1080 Whole Cell lysates Antibody Dilution: 1.0ug/ml