

Datasheet for ABIN2791058
anti-LIPA3 antibody (C-Term)[Go to Product page](#)

1 Image

Overview

Quantity:	100 µL
Target:	LIPA3 (PPFIA3)
Binding Specificity:	C-Term
Reactivity:	Human, Mouse, Rat, Cow, Guinea Pig, Horse, Dog, Rabbit
Host:	Rabbit
Clonality:	Polyclonal
Conjugate:	This LIPA3 antibody is un-conjugated
Application:	Western Blotting (WB)

Product Details

Immunogen:	The immunogen is a synthetic peptide directed towards the C-terminal region of Rat Ppfia3
Sequence:	ETFDYSDLAL LLQIPTQNAQ ARQLLEKEFS NLISLGTDRR LDEDSAKSFS
Predicted Reactivity:	Cow: 100%, Dog: 100%, Guinea Pig: 100%, Horse: 100%, Human: 100%, Mouse: 100%, Rabbit: 77%, Rat: 100%
Characteristics:	This is a rabbit polyclonal antibody against Ppfia3. It was validated on Western Blot.
Purification:	Affinity Purified

Target Details

Target:	LIPA3 (PPFIA3)
Alternative Name:	Ppfia3 (PPFIA3 Products)

Target Details

Background: Ppfia3 may play a role in integrating active zone proteins and synaptic vesicles.
Alias Symbols: -
Protein Interaction Partner: Rims2, Rims1,
Protein Size: 1192

Molecular Weight: 133 kDa

Gene ID: 140591

NCBI Accession: [NM_001270985](#), [NP_001257914](#)

UniProt: [F1LSE6](#)

Application Details

Application Notes: Optimal working dilution should be determined by the investigator.

Restrictions: For Research Use only

Handling

Format: Liquid

Concentration: 1 mg/mL

Buffer: Liquid. Purified antibody supplied in 1x PBS buffer with 0.09 % (w/v) sodium azide and 2 % sucrose.

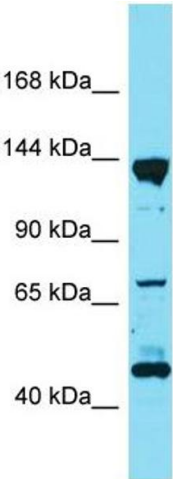
Preservative: Sodium azide

Precaution of Use: This product contains Sodium azide: a POISONOUS AND HAZARDOUS SUBSTANCE which should be handled by trained staff only.

Handling Advice: Avoid repeat freeze-thaw cycles.

Storage: -20 °C

Storage Comment: For short term use, store at 2-8°C up to 1 week. For long term storage, store at -20°C in small aliquots to prevent freeze-thaw cycles.



Western Blotting

Image 1.