

Datasheet for ABIN2791059

**anti-CCDC144A antibody (C-Term)**[Go to Product page](#)**1** Image

## Overview

Quantity:	100 µL
Target:	CCDC144A
Binding Specificity:	C-Term
Reactivity:	Human
Host:	Rabbit
Clonality:	Polyclonal
Conjugate:	This CCDC144A antibody is un-conjugated
Application:	Western Blotting (WB)

## Product Details

Immunogen:	The immunogen is a synthetic peptide directed towards the C-terminal region of human CCDC144A
Sequence:	TELERYKELY LEEVKVRESL SNELSRTNEM IAEVSTQLTV EKEQTRSRSL
Predicted Reactivity:	Human: 100%
Characteristics:	This is a rabbit polyclonal antibody against CCDC144A. It was validated on Western Blot.
Purification:	Affinity Purified

## Target Details

Target:	CCDC144A
Alternative Name:	CCDC144A ( <a href="#">CCDC144A Products</a> )

### Target Details

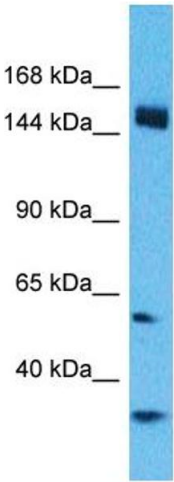
Background:	Protein Size: 1427
Molecular Weight:	156 kDa
Gene ID:	9720
NCBI Accession:	<a href="#">NM_014695</a> , <a href="#">NP_055510</a>
UniProt:	<a href="#">B7ZM27</a>

### Application Details

Restrictions:	For Research Use only
---------------	-----------------------

### Handling

Format:	Liquid
Concentration:	1 mg/mL
Buffer:	Liquid. Purified antibody supplied in 1x PBS buffer with 0.09 % (w/v) sodium azide and 2 % sucrose.
Preservative:	Sodium azide
Precaution of Use:	This product contains Sodium azide: a POISONOUS AND HAZARDOUS SUBSTANCE which should be handled by trained staff only.
Handling Advice:	Avoid repeat freeze-thaw cycles.
Storage:	-20 °C
Storage Comment:	For short term use, store at 2-8°C up to 1 week. For long term storage, store at -20°C in small aliquots to prevent freeze-thaw cycles.



Host: Rabbit  
Target Name: CCDC144A  
Sample Tissue: Hela Cell Lysate  
Antibody Dilution: 1.0µg/ml

Western Blotting

**Image 1.** Host: Rabbit Target Name: CCDC144A Sample Type: Hela Whole cell lysates Antibody Dilution: 1.0ug/ml