

Datasheet for ABIN2791060
anti-SPCS2 antibody (N-Term)[Go to Product page](#)

1 Image

Overview

Quantity:	100 µL
Target:	SPCS2
Binding Specificity:	N-Term
Reactivity:	Human, Mouse, Rat, Rabbit, Dog, Guinea Pig, Horse, Zebrafish (Danio rerio), Cow
Host:	Rabbit
Clonality:	Polyclonal
Conjugate:	This SPCS2 antibody is un-conjugated
Application:	Western Blotting (WB)

Product Details

Immunogen:	The immunogen is a synthetic peptide directed towards the N-terminal region of Rat Spcs2
Sequence:	GTSSSRSGLL DKWKIDDKPV KIDKWDGSAV KNSLDDSAKK VLLEKYKYVE
Predicted Reactivity:	Cow: 100%, Dog: 100%, Guinea Pig: 100%, Horse: 100%, Human: 100%, Mouse: 100%, Rabbit: 100%, Rat: 100%, Zebrafish: 86%
Characteristics:	This is a rabbit polyclonal antibody against Spcs2. It was validated on Western Blot.
Purification:	Affinity Purified

Target Details

Target:	SPCS2
Alternative Name:	Spcs2 (SPCS2 Products)

Target Details

Background: The function of this protein remains unknown.
Alias Symbols: RGD1311253
Protein Interaction Partner: STXBP5L,
Protein Size: 226

Molecular Weight: 24 kDa

Gene ID: 293142

NCBI Accession: [NM_001191601](#), [NP_001178530](#)

UniProt: [D3ZD11](#)

Pathways: [Peptide Hormone Metabolism](#)

Application Details

Application Notes: Optimal working dilution should be determined by the investigator.

Restrictions: For Research Use only

Handling

Format: Liquid

Concentration: 1 mg/mL

Buffer: Liquid. Purified antibody supplied in 1x PBS buffer with 0.09 % (w/v) sodium azide and 2 % sucrose.

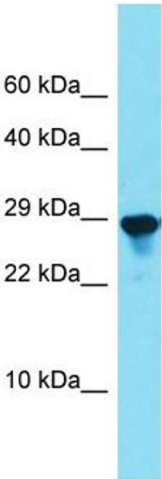
Preservative: Sodium azide

Precaution of Use: This product contains Sodium azide: a POISONOUS AND HAZARDOUS SUBSTANCE which should be handled by trained staff only.

Handling Advice: Avoid repeat freeze-thaw cycles.

Storage: -20 °C

Storage Comment: For short term use, store at 2-8°C up to 1 week. For long term storage, store at -20°C in small aliquots to prevent freeze-thaw cycles.



Western Blotting

Image 1.