

Datasheet for ABIN2791071
anti-RRP8 antibody (N-Term)

2 Images

[Go to Product page](#)

Overview

Quantity:	100 µL
Target:	RRP8
Binding Specificity:	N-Term
Reactivity:	Human, Rat, Cow, Horse, Rabbit
Host:	Rabbit
Clonality:	Polyclonal
Conjugate:	This RRP8 antibody is un-conjugated
Application:	Western Blotting (WB)

Product Details

Immunogen:	The immunogen is a synthetic peptide directed towards the N-terminal region of Human RRP8
Sequence:	GKKGKKKCQK QGPPCSDSEE EVERKKKCHK QALVGSDSAE DEKRKRKCQK
Predicted Reactivity:	Cow: 83%, Horse: 85%, Human: 100%, Rabbit: 85%, Rat: 93%
Characteristics:	This is a rabbit polyclonal antibody against RRP8. It was validated on Western Blot.
Purification:	Affinity Purified

Target Details

Target:	RRP8
Alternative Name:	RRP8 (RRP8 Products)
Background:	RRP8 is an essential component of the eNoSC (energy-dependent nucleolar silencing) complex,

Target Details

a complex that mediates silencing of rDNA in response to intracellular energy status and acts by recruiting histone-modifying enzymes. The eNoSC complex is able to sense the energy status of cell: upon glucose starvation, elevation of NAD⁺/NADP⁺ ratio activates SIRT1, leading to histone H3 deacetylation followed by dimethylation of H3 at 'Lys-9' (H3K9me2) by SUV39H1 and the formation of silent chromatin in the rDNA locus. In the complex, RRP8 binds to H3K9me2 and probably acts as a methyltransferase. Its substrates are however unknown.

Alias Symbols: KIAA0409

Protein Interaction Partner: RNF2, SIRT7, SIRT1, SUV39H1, USP39,

Protein Size: 456

Molecular Weight: 50 kDa

Gene ID: 23378

NCBI Accession: [NM_015324](#), [NP_056139](#)

UniProt: [O43159](#)

Application Details

Application Notes: Optimal working dilutions should be determined experimentally by the investigator.

Comment: Antigen size: 456 AA

Restrictions: For Research Use only

Handling

Format: Liquid

Concentration: Lot specific

Buffer: Liquid. Purified antibody supplied in 1x PBS buffer with 0.09 % (w/v) sodium azide and 2 % sucrose.

Preservative: Sodium azide

Precaution of Use: This product contains Sodium azide: a POISONOUS AND HAZARDOUS SUBSTANCE which should be handled by trained staff only.

Handling Advice: Avoid repeated freeze-thaw cycles.

Storage: -20 °C

Storage Comment: For short term use, store at 2-8°C up to 1 week. For long term storage, store at -20°C in small

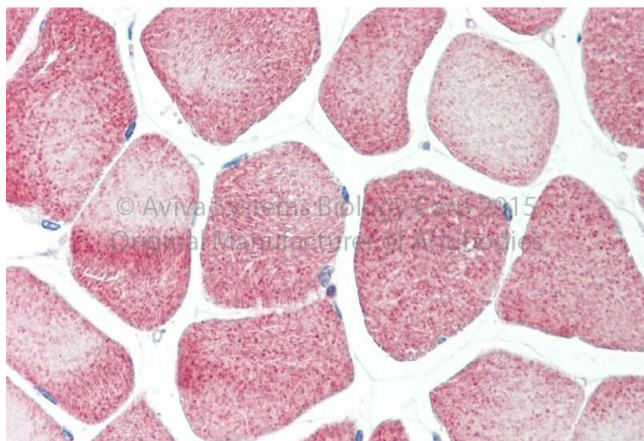
aliquots to prevent freeze-thaw cycles.

Images



Western Blotting

Image 1. Host: Rabbit Target Name: RRP8 Sample Type: Fetal Kidney lysates Antibody Dilution: 1.0ug/ml



Immunohistochemistry

Image 2. Rabbit Anti-RRP8 Antibody Catalog Number: ARP68566 Formalin Fixed Paraffin Embedded Tissue: Human Adult Skeletal muscle Observed Staining: Cytoplasm in hepatocytes Primary Antibody Concentration: 1:600 Secondary Antibody: Donkey anti-Rabbit-Cy3 Secondary Antibody Concentration: 1:200 Magnification: 20X Exposure Time: 0.5 – 2.0 sec