

Datasheet for ABIN2791072  
**anti-RRP8 antibody (N-Term)**



[Go to Product page](#)

1 Image

## Overview

Quantity:	100 µL
Target:	RRP8
Binding Specificity:	N-Term
Reactivity:	Human, Rat, Cow, Horse, Rabbit, Guinea Pig, Dog, Saccharomyces cerevisiae
Host:	Rabbit
Clonality:	Polyclonal
Conjugate:	This RRP8 antibody is un-conjugated
Application:	Western Blotting (WB)

## Product Details

Immunogen:	The immunogen is a synthetic peptide directed towards the N-terminal region of Human RRP8
Sequence:	GPPCSDSEEE VERKKKCHKQ ALVGSDSAED EKRKRKCQKH APINSAQHLD
Predicted Reactivity:	Cow: 80%, Dog: 85%, Guinea Pig: 91%, Horse: 85%, Human: 100%, Rabbit: 100%, Rat: 93%, Yeast: 90%
Characteristics:	This is a rabbit polyclonal antibody against RRP8. It was validated on Western Blot.
Purification:	Affinity Purified

## Target Details

Target:	RRP8
Alternative Name:	RRP8 ( <a href="#">RRP8 Products</a> )

## Target Details

Background:	<p>RRP8 is an essential component of the eNoSC (energy-dependent nucleolar silencing) complex, a complex that mediates silencing of rDNA in response to intracellular energy status and acts by recruiting histone-modifying enzymes. The eNoSC complex is able to sense the energy status of cell: upon glucose starvation, elevation of NAD<sup>+</sup>/NADP<sup>+</sup> ratio activates SIRT1, leading to histone H3 deacetylation followed by dimethylation of H3 at 'Lys-9' (H3K9me2) by SUV39H1 and the formation of silent chromatin in the rDNA locus. In the complex, RRP8 binds to H3K9me2 and probably acts as a methyltransferase. Its substrates are however unknown.</p> <p>Alias Symbols: KIAA0409</p> <p>Protein Interaction Partner: RNF2, SIRT7, SIRT1, SUV39H1, USP39,</p> <p>Protein Size: 456</p>
-------------	--

Molecular Weight:	50 kDa
-------------------	--------

Gene ID:	23378
----------	-------

NCBI Accession:	<a href="#">NM_015324</a> , <a href="#">NP_056139</a>
-----------------	---

UniProt:	<a href="#">O43159</a>
----------	------------------------

## Application Details

Application Notes:	Optimal working dilutions should be determined experimentally by the investigator.
--------------------	--

Comment:	Antigen size: 456 AA
----------	----------------------

Restrictions:	For Research Use only
---------------	-----------------------

## Handling

Format:	Liquid
---------	--------

Concentration:	Lot specific
----------------	--------------

Buffer:	Liquid. Purified antibody supplied in 1x PBS buffer with 0.09 % (w/v) sodium azide and 2 % sucrose.
---------	---

Preservative:	Sodium azide
---------------	--------------

Precaution of Use:	This product contains Sodium azide: a POISONOUS AND HAZARDOUS SUBSTANCE which should be handled by trained staff only.
--------------------	--

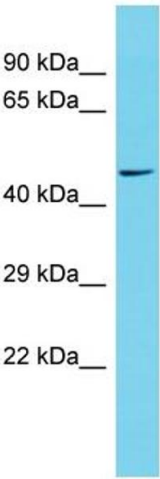
Handling Advice:	Avoid repeated freeze-thaw cycles.
------------------	------------------------------------

Storage:	-20 °C
----------	--------

Handling

Storage Comment: For short term use, store at 2-8°C up to 1 week. For long term storage, store at -20°C in small aliquots to prevent freeze-thaw cycles.

Images



Western Blotting

**Image 1.** Host: Rabbit Target Name: RRP8 Sample Type: Placenta lysates Antibody Dilution: 1.0ug/ml