

Datasheet for ABIN2791086
anti-TAS2R3 antibody (Middle Region)[Go to Product page](#)

1 Image

Overview

Quantity:	100 µL
Target:	TAS2R3
Binding Specificity:	Middle Region
Reactivity:	Human, Dog, Horse
Host:	Rabbit
Clonality:	Polyclonal
Conjugate:	This TAS2R3 antibody is un-conjugated
Application:	Western Blotting (WB)

Product Details

Immunogen:	The immunogen is a synthetic peptide directed towards the middle region of Human TAS2R3
Sequence:	VMVWMLLGAL LLSCGSTASL INEFKLYSVF RGIEATRNVT EHFRKKRSEY
Predicted Reactivity:	Dog: 85%, Horse: 86%, Human: 100%
Characteristics:	This is a rabbit polyclonal antibody against TAS2R3. It was validated on Western Blot.
Purification:	Affinity Purified

Target Details

Target:	TAS2R3
Alternative Name:	TAS2R3 (TAS2R3 Products)
Background:	This gene encodes a member of a family of candidate taste receptors that are members of the

Target Details

G protein-coupled receptor superfamily and that are specifically expressed by taste receptor cells of the tongue and palate epithelia. These apparently intronless taste receptor genes encode a 7-transmembrane receptor protein, functioning as a bitter taste receptor. This gene is clustered with another 3 candidate taste receptor genes in chromosome 7 and is genetically linked to loci that influence bitter perception.

Alias Symbols: T2R3

Protein Size: 316

Molecular Weight: 35 kDa

Gene ID: 50831

NCBI Accession: [NM_016943](#), [NP_058639](#)

UniProt: [Q9NYW6](#)

Application Details

Application Notes: Optimal working dilutions should be determined experimentally by the investigator.

Comment: Antigen size: 316 AA

Restrictions: For Research Use only

Handling

Format: Liquid

Concentration: Lot specific

Buffer: Liquid. Purified antibody supplied in 1x PBS buffer with 0.09 % (w/v) sodium azide and 2 % sucrose.

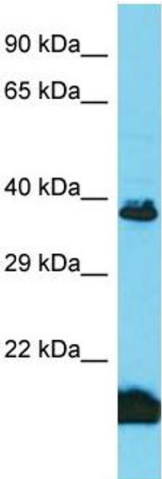
Preservative: Sodium azide

Precaution of Use: This product contains Sodium azide: a POISONOUS AND HAZARDOUS SUBSTANCE which should be handled by trained staff only.

Handling Advice: Avoid repeated freeze-thaw cycles.

Storage: -20 °C

Storage Comment: For short term use, store at 2-8°C up to 1 week. For long term storage, store at -20°C in small aliquots to prevent freeze-thaw cycles.



Western Blotting

Image 1. Host: Rabbit Target Name: TAS2R3 Sample Type: Fetal Kidney lysates Antibody Dilution: 1.0ug/ml