

Datasheet for ABIN2791089
anti-RRP15 antibody (C-Term)[Go to Product page](#)

1 Image

Overview

Quantity:	100 µL
Target:	RRP15
Binding Specificity:	C-Term
Reactivity:	Human
Host:	Rabbit
Clonality:	Polyclonal
Conjugate:	This RRP15 antibody is un-conjugated
Application:	Western Blotting (WB)

Product Details

Immunogen:	The immunogen is a synthetic peptide directed towards the C-terminal region of Human RRP15
Sequence:	ISTVSKKDFI SVLRGMDGST NETASSRKKP KAKQTEVKSE EGPGWITLRD
Predicted Reactivity:	Human: 100%
Characteristics:	This is a rabbit polyclonal antibody against RRP15. It was validated on Western Blot.
Purification:	Affinity Purified

Target Details

Target:	RRP15
Alternative Name:	RRP15 (RRP15 Products)
Background:	This gene encodes a protein that co-purifies with human nucleoli. A similar protein in budding

Target Details

yeast is a component of pre-60S ribosomal particles, and is required for the early maturation steps of the 60S subunit.

Alias Symbols: KIAA0507

Protein Interaction Partner: UBC, SUM01, SRPK3, CLN8, APP, COPS5, CUL3, SUM02, TAF1D, SART3, USP2, EIF6,

Protein Size: 259

Molecular Weight: 28 kDa

Gene ID: 51018

NCBI Accession: [NM_016052](#), [NP_057136](#)

Application Details

Application Notes: Optimal working dilutions should be determined experimentally by the investigator.

Comment: Antigen size: 259 AA

Restrictions: For Research Use only

Handling

Format: Liquid

Concentration: Lot specific

Buffer: Liquid. Purified antibody supplied in 1x PBS buffer with 0.09 % (w/v) sodium azide and 2 % sucrose.

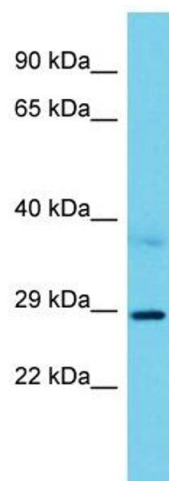
Preservative: Sodium azide

Precaution of Use: This product contains Sodium azide: a POISONOUS AND HAZARDOUS SUBSTANCE which should be handled by trained staff only.

Handling Advice: Avoid repeated freeze-thaw cycles.

Storage: -20 °C

Storage Comment: For short term use, store at 2-8°C up to 1 week. For long term storage, store at -20°C in small aliquots to prevent freeze-thaw cycles.



Western Blotting

Image 1. Host: Rabbit Target Name: RRP15 Sample Type: A549 Whole Cell lysates Antibody Dilution: 1.0ug/ml RRP15 is supported by BioGPS gene expression data to be expressed in A549