

Datasheet for ABIN2791102
anti-KANSL2 antibody (N-Term)[Go to Product page](#)

1 Image

Overview

Quantity:	100 µL
Target:	KANSL2
Binding Specificity:	N-Term
Reactivity:	Human, Cow, Dog, Goat, Guinea Pig, Horse, Mouse, Pig, Rabbit, Rat, Zebrafish (Danio rerio)
Host:	Rabbit
Clonality:	Polyclonal
Conjugate:	This KANSL2 antibody is un-conjugated
Application:	Western Blotting (WB)

Product Details

Immunogen:	The immunogen is a synthetic peptide directed towards the N-terminal region of Human KANSL2
Sequence:	CSHPRLEGQE FCIKHILEDK NAPFKQCSYI STKNGKRCPN AAPKPEKKDG
Predicted Reactivity:	Cow: 86%, Dog: 93%, Goat: 93%, Guinea Pig: 93%, Horse: 93%, Human: 100%, Mouse: 86%, Pig: 100%, Rabbit: 100%, Rat: 93%, Zebrafish: 86%
Characteristics:	This is a rabbit polyclonal antibody against KANSL2. It was validated on Western Blot.
Purification:	Affinity Purified

Target Details

Target:	KANSL2
---------	--------

Target Details

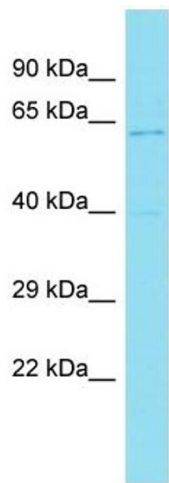
Alternative Name:	KANSL2 (KANSL2 Products)
Background:	<p>As part of the NSL complex KANSL2 is involved in acetylation of nucleosomal histone H4 on several lysine residues and therefore may be involved in the regulation of transcription.</p> <p>Alias Symbols: C12orf41, NSL2</p> <p>Protein Interaction Partner: IKBKG, APP, Kat8,</p> <p>Protein Size: 390</p>
Molecular Weight:	43 kDa
Gene ID:	54934
NCBI Accession:	NM_017822 , NP_060292

Application Details

Application Notes:	Optimal working dilutions should be determined experimentally by the investigator.
Comment:	Antigen size: 390 AA
Restrictions:	For Research Use only

Handling

Format:	Liquid
Concentration:	Lot specific
Buffer:	Liquid. Purified antibody supplied in 1x PBS buffer with 0.09 % (w/v) sodium azide and 2 % sucrose.
Preservative:	Sodium azide
Precaution of Use:	This product contains Sodium azide: a POISONOUS AND HAZARDOUS SUBSTANCE which should be handled by trained staff only.
Handling Advice:	Avoid repeated freeze-thaw cycles.
Storage:	-20 °C
Storage Comment:	For short term use, store at 2-8°C up to 1 week. For long term storage, store at -20°C in small aliquots to prevent freeze-thaw cycles.



Western Blotting

Image 1. Host: Rabbit Target Name: KANSL2 Sample Type: HeLa Whole Cell lysates Antibody Dilution: 1.0ug/ml
KANSL2 is supported by BioGPS gene expression data to be expressed in HeLa