



Datasheet for ABIN2791104
anti-C4ORF27 antibody (N-Term)



[Go to Product page](#)

1 Image

Overview

Quantity:	100 µL
Target:	C4ORF27
Binding Specificity:	N-Term
Reactivity:	Human, Mouse, Rat, Cow, Dog, Horse, Pig, Rabbit
Host:	Rabbit
Clonality:	Polyclonal
Conjugate:	This C4ORF27 antibody is un-conjugated
Application:	Western Blotting (WB)

Product Details

Immunogen:	The immunogen is a synthetic peptide directed towards the N-terminal region of Human C4orf27
Sequence:	GPQCEKTTDV KSKFCEADV SSDLRKEVEN HYKLSLPEDF YHFWKFCEEL
Predicted Reactivity:	Cow: 79%, Dog: 86%, Horse: 93%, Human: 100%, Mouse: 86%, Pig: 79%, Rabbit: 79%, Rat: 86%
Characteristics:	This is a rabbit polyclonal antibody against C4orf27. It was validated on Western Blot.
Purification:	Affinity Purified

Target Details

Target:	C4ORF27
Alternative Name:	C4orf27 (C4ORF27 Products)

Target Details

Background: The function of this protein remains unknown.
Alias Symbols: -
Protein Interaction Partner: UBC, TFAP4, EIF6,
Protein Size: 346

Molecular Weight: 38 kDa

Gene ID: 54969

NCBI Accession: [NM_017867](#), [NP_060337](#)

UniProt: [Q9NWX4](#)

Application Details

Application Notes: Optimal working dilutions should be determined experimentally by the investigator.

Comment: Antigen size: 346 AA

Restrictions: For Research Use only

Handling

Format: Liquid

Concentration: Lot specific

Buffer: Liquid. Purified antibody supplied in 1x PBS buffer with 0.09 % (w/v) sodium azide and 2 % sucrose.

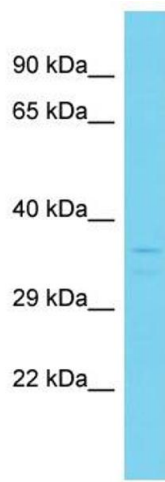
Preservative: Sodium azide

Precaution of Use: This product contains Sodium azide: a POISONOUS AND HAZARDOUS SUBSTANCE which should be handled by trained staff only.

Handling Advice: Avoid repeated freeze-thaw cycles.

Storage: -20 °C

Storage Comment: For short term use, store at 2-8°C up to 1 week. For long term storage, store at -20°C in small aliquots to prevent freeze-thaw cycles.



Western Blotting

Image 1. Host: Rabbit Target Name: C4orf27 Sample Type: 721_B Whole Cell lysates Antibody Dilution: 1.0ug/ml
C4orf27 is supported by BioGPS gene expression data to be expressed in 721_B