

Datasheet for ABIN2791105
anti-MARC2 antibody (C-Term)



[Go to Product page](#)

1 Image

Overview

Quantity:	100 µL
Target:	MARC2
Binding Specificity:	C-Term
Reactivity:	Human, Mouse, Cow, Dog
Host:	Rabbit
Clonality:	Polyclonal
Conjugate:	This MARC2 antibody is un-conjugated
Application:	Western Blotting (WB)

Product Details

Immunogen:	The immunogen is a synthetic peptide directed towards the C-terminal region of Human MARC2
Sequence:	ACPRCILTTV DPDTGVDRK QPLDTLKSYP LCDPSERELY KLSPLFGIYY
Predicted Reactivity:	Cow: 91%, Dog: 82%, Human: 100%, Mouse: 79%
Characteristics:	This is a rabbit polyclonal antibody against MARC2. It was validated on Western Blot.
Purification:	Affinity Purified

Target Details

Target:	MARC2
Alternative Name:	MARC2 (MARC2 Products)

Target Details

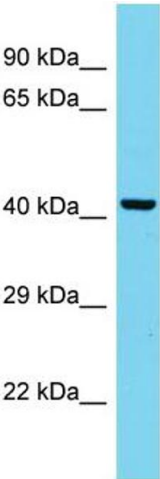
Background:	As a component of the benzamidoxime prodrug-converting complex, MARC2 is required to reduce N-hydroxylated prodrugs, such as benzamidoxime. It also able to reduce N(omega)-hydroxy-L-arginine (NOHA) and N(omega)-hydroxy-N(delta)-methyl-L-arginine (NHAM) into L-arginine and N(delta)-methyl-L-arginine. Alias Symbols: MOSC2, RP11-270A6.1 Protein Interaction Partner: UBC, Protein Size: 335
Molecular Weight:	38 kDa
Gene ID:	54996
NCBI Accession:	NM_017898 , NP_060368
UniProt:	Q969Z3

Application Details

Application Notes:	Optimal working dilutions should be determined experimentally by the investigator.
Comment:	Antigen size: 335 AA
Restrictions:	For Research Use only

Handling

Format:	Liquid
Concentration:	Lot specific
Buffer:	Liquid. Purified antibody supplied in 1x PBS buffer with 0.09 % (w/v) sodium azide and 2 % sucrose.
Preservative:	Sodium azide
Precaution of Use:	This product contains Sodium azide: a POISONOUS AND HAZARDOUS SUBSTANCE which should be handled by trained staff only.
Handling Advice:	Avoid repeated freeze-thaw cycles.
Storage:	-20 °C
Storage Comment:	For short term use, store at 2-8°C up to 1 week. For long term storage, store at -20°C in small aliquots to prevent freeze-thaw cycles.



Western Blotting

Image 1. Host: Rabbit Target Name: MARC2 Sample Type: HepG2 Whole Cell lysates Antibody Dilution: 1.0ug/ml