



[Go to Product page](#)

Datasheet for ABIN2791111

anti-C14ORF105 antibody (C-Term)

1 Image

Overview

Quantity:	100 µL
Target:	C14ORF105
Binding Specificity:	C-Term
Reactivity:	Human, Horse, Rabbit, Saccharomyces cerevisiae
Host:	Rabbit
Clonality:	Polyclonal
Conjugate:	This C14ORF105 antibody is un-conjugated
Application:	Western Blotting (WB)

Product Details

Immunogen:	The immunogen is a synthetic peptide directed towards the C-terminal region of Human C14orf105
Sequence:	WKIGKMETWL HEQEAQGQLL WSSSSSDSDE QGKDEKKPRA LVRTTRTERIP
Predicted Reactivity:	Horse: 86%, Human: 100%, Rabbit: 83%, Yeast: 83%
Characteristics:	This is a rabbit polyclonal antibody against C14orf105. It was validated on Western Blot.
Purification:	Affinity Purified

Target Details

Target:	C14ORF105
Alternative Name:	C14orf105 (C14ORF105 Products)

Target Details

Background: The function of this protein remains unknown.
Alias Symbols: -
Protein Interaction Partner: SPERT, FAM9B, KRT40, SSX2IP, LZTS2, TEX11, MTUS2, PDE4DIP, PNMA1, TRAF2, TRAF1, SIAH1, TRIM27, MDFI, GOLGA2, FHL3,
Protein Size: 296

Molecular Weight: 33 kDa

Gene ID: 55195

NCBI Accession: [NM_018168](#), [NP_060638](#)

UniProt: [Q9NVL8](#)

Application Details

Application Notes: Optimal working dilutions should be determined experimentally by the investigator.

Comment: Antigen size: 296 AA

Restrictions: For Research Use only

Handling

Format: Liquid

Concentration: Lot specific

Buffer: Liquid. Purified antibody supplied in 1x PBS buffer with 0.09 % (w/v) sodium azide and 2 % sucrose.

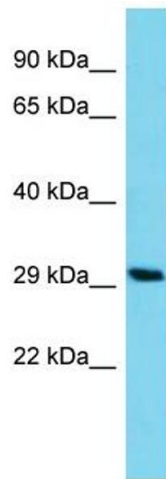
Preservative: Sodium azide

Precaution of Use: This product contains Sodium azide: a POISONOUS AND HAZARDOUS SUBSTANCE which should be handled by trained staff only.

Handling Advice: Avoid repeated freeze-thaw cycles.

Storage: -20 °C

Storage Comment: For short term use, store at 2-8°C up to 1 week. For long term storage, store at -20°C in small aliquots to prevent freeze-thaw cycles.



Western Blotting

Image 1. Host: Rabbit Target Name: C14orf105 Sample Type: HCT15 Whole Cell lysates Antibody Dilution: 1.0ug/ml