



[Go to Product page](#)

Datasheet for ABIN2791114  
**anti-TMEM39A antibody (Middle Region)**

1 Image

Overview

Quantity:	100 µL
Target:	TMEM39A
Binding Specificity:	Middle Region
Reactivity:	Human, Mouse, Rat, Cow, Dog, Guinea Pig, Horse, Rabbit
Host:	Rabbit
Clonality:	Polyclonal
Conjugate:	This TMEM39A antibody is un-conjugated
Application:	Western Blotting (WB)

Product Details

Immunogen:	The immunogen is a synthetic peptide directed towards the middle region of Mouse Tmem39a
Sequence:	LGKWQKLEHG FYSNAPQHIW SENTIWPQGV LVRHSRCLYR AMGPYNVAVP
Predicted Reactivity:	Cow: 100%, Dog: 100%, Guinea Pig: 100%, Horse: 100%, Human: 100%, Mouse: 93%, Rabbit: 93%, Rat: 100%
Characteristics:	This is a rabbit polyclonal antibody against Tmem39a. It was validated on Western Blot.
Purification:	Affinity Purified

Target Details

Target:	TMEM39A
Alternative Name:	Tmem39a ( <a href="#">TMEM39A Products</a> )

## Target Details

---

Background: The function of this protein remains unknown.  
Alias Symbols: 2610033C09Rik  
Protein Size: 486

---

Molecular Weight: 53 kDa

---

Gene ID: 67846

---

NCBI Accession: [NM\\_026407](#), [NP\\_080683](#)

---

UniProt: [Q9CYC3](#)

---

## Application Details

---

Application Notes: Optimal working dilution should be determined by the investigator.

---

Restrictions: For Research Use only

---

## Handling

---

Format: Liquid

---

Concentration: 1 mg/mL

---

Buffer: Liquid. Purified antibody supplied in 1x PBS buffer with 0.09 % (w/v) sodium azide and 2 % sucrose.

---

Preservative: Sodium azide

---

Precaution of Use: This product contains Sodium azide: a POISONOUS AND HAZARDOUS SUBSTANCE which should be handled by trained staff only.

---

Handling Advice: Avoid repeat freeze-thaw cycles.

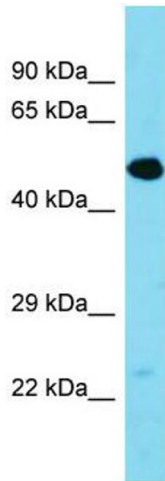
---

Storage: -20 °C

---

Storage Comment: For short term use, store at 2-8°C up to 1 week. For long term storage, store at -20°C in small aliquots to prevent freeze-thaw cycles.

---



### Western Blotting

Image 1.