



Datasheet for ABIN2791117
anti-C4orf43 antibody (Middle Region)



[Go to Product page](#)

1 Image

Overview

Quantity:	100 µL
Target:	C4orf43
Binding Specificity:	Middle Region
Reactivity:	Human, Mouse, Rat, Guinea Pig, Horse, Rabbit
Host:	Rabbit
Clonality:	Polyclonal
Conjugate:	This C4orf43 antibody is un-conjugated
Application:	Western Blotting (WB)

Product Details

Immunogen:	The immunogen is a synthetic peptide directed towards the middle region of Mouse Tma16
Sequence:	IGDKLQWFHS HLDMMKTRYS KKDACEIVER YLDRFSSELE QIELQNSIKD
Predicted Reactivity:	Guinea Pig: 79%, Horse: 86%, Human: 100%, Mouse: 91%, Rabbit: 85%, Rat: 100%
Characteristics:	This is a rabbit polyclonal antibody against Tma16. It was validated on Western Blot.
Purification:	Affinity Purified

Target Details

Target:	C4orf43
Alternative Name:	Tma16 (C4orf43 Products)
Background:	The function of this protein remains unknown.

Target Details

Alias Symbols: Tma16

Protein Size: 221

Molecular Weight: 24 kDa

Gene ID: 66282

NCBI Accession: [NM_025465](#), [NP_079741](#)

UniProt: [Q9CR02](#)

Application Details

Application Notes: Optimal working dilution should be determined by the investigator.

Restrictions: For Research Use only

Handling

Format: Liquid

Concentration: 1 mg/mL

Buffer: Liquid. Purified antibody supplied in 1x PBS buffer with 0.09 % (w/v) sodium azide and 2 % sucrose.

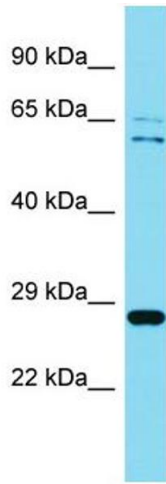
Preservative: Sodium azide

Precaution of Use: This product contains Sodium azide: a POISONOUS AND HAZARDOUS SUBSTANCE which should be handled by trained staff only.

Handling Advice: Avoid repeat freeze-thaw cycles.

Storage: -20 °C

Storage Comment: For short term use, store at 2-8°C up to 1 week. For long term storage, store at -20°C in small aliquots to prevent freeze-thaw cycles.



Western Blotting

Image 1.