

Datasheet for ABIN2791122  
**anti-C17ORF85 antibody (C-Term)**



[Go to Product page](#)

1 Image

## Overview

Quantity:	100 µL
Target:	C17ORF85
Binding Specificity:	C-Term
Reactivity:	Human, Cow, Dog, Guinea Pig, Horse, Mouse, Pig, Rabbit, Rat
Host:	Rabbit
Clonality:	Polyclonal
Conjugate:	This C17ORF85 antibody is un-conjugated
Application:	Western Blotting (WB)

## Product Details

Immunogen:	The immunogen is a synthetic peptide directed towards the C-terminal region of Human C17orf85
Sequence:	PSSDVHSRLG VPRQDSKGLY ADTREKKSGN LWTRLGSAPK TKEKNTKKVD
Predicted Reactivity:	Cow: 93%, Dog: 100%, Guinea Pig: 79%, Horse: 93%, Human: 100%, Mouse: 93%, Pig: 93%, Rabbit: 100%, Rat: 93%
Characteristics:	This is a rabbit polyclonal antibody against C17orf85. It was validated on Western Blot.
Purification:	Affinity Purified

## Target Details

Target:	C17ORF85
---------	----------

## Target Details

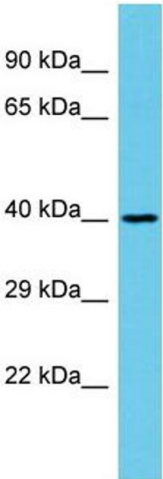
Alternative Name:	C17orf85 ( <a href="#">C17ORF85 Products</a> )
Background:	<p>The function of this protein remains unknown.</p> <p>Alias Symbols: ELG, HSA277841</p> <p>Protein Interaction Partner: UBC, SUZ12, RNF2, BMI1, SRPK2, SNIP1, NCBP1, HNRNPH3, APP, CUL3, SUMO2,</p> <p>Protein Size: 340</p>
Molecular Weight:	38 kDa
Gene ID:	55421
NCBI Accession:	<a href="#">NM_018553</a> , <a href="#">NP_061023</a>

## Application Details

Application Notes:	Optimal working dilutions should be determined experimentally by the investigator.
Comment:	Antigen size: 340 AA
Restrictions:	For Research Use only

## Handling

Format:	Liquid
Concentration:	Lot specific
Buffer:	Liquid. Purified antibody supplied in 1x PBS buffer with 0.09 % (w/v) sodium azide and 2 % sucrose.
Preservative:	Sodium azide
Precaution of Use:	This product contains Sodium azide: a POISONOUS AND HAZARDOUS SUBSTANCE which should be handled by trained staff only.
Handling Advice:	Avoid repeated freeze-thaw cycles.
Storage:	-20 °C
Storage Comment:	For short term use, store at 2-8°C up to 1 week. For long term storage, store at -20°C in small aliquots to prevent freeze-thaw cycles.



Western Blotting

**Image 1.** Host: Rabbit Target Name: C17orf85 Sample Type: Fetal Kidney lysates Antibody Dilution: 1.0ug/ml