



[Go to Product page](#)

Datasheet for ABIN2791126  
**anti-ANKRD10 antibody (C-Term)**

1 Image

### Overview

Quantity:	100 µL
Target:	ANKRD10
Binding Specificity:	C-Term
Reactivity:	Human
Host:	Rabbit
Clonality:	Polyclonal
Application:	Western Blotting (WB)

### Product Details

Immunogen:	The immunogen is a synthetic peptide directed towards the C-terminal region of Human ANKRD10
Sequence:	SQGS LCISGT EEPEKTLRAN PELCGSLHLN GSPSSCIASR PSWVEDIGDN
Predicted Reactivity:	Human: 100%
Characteristics:	This is a rabbit polyclonal antibody against ANKRD10. It was validated on Western Blot.
Purification:	Affinity Purified

### Target Details

Target:	ANKRD10
Alternative Name:	ANKRD10 ( <a href="#">ANKRD10 Products</a> )
Background:	The function of this protein remains unknown.

## Target Details

---

Alias Symbols: -

Protein Interaction Partner: APPBP2, ELAVL1, UBC,

Protein Size: 420

---

Molecular Weight: 44 kDa

---

Gene ID: 55608

---

NCBI Accession: [NM\\_017664](#), [NP\\_060134](#)

---

UniProt: [Q9NXR5](#)

---

## Application Details

---

Application Notes: Optimal working dilutions should be determined experimentally by the investigator.

---

Comment: Antigen size: 420 AA

---

Restrictions: For Research Use only

---

## Handling

---

Format: Liquid

---

Concentration: Lot specific

---

Buffer: Liquid. Purified antibody supplied in 1x PBS buffer with 0.09 % (w/v) sodium azide and 2 % sucrose.

---

Preservative: Sodium azide

---

Precaution of Use: This product contains Sodium azide: a POISONOUS AND HAZARDOUS SUBSTANCE which should be handled by trained staff only.

---

Handling Advice: Avoid repeated freeze-thaw cycles.

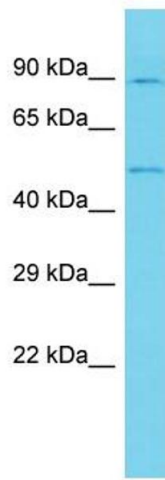
---

Storage: -20 °C

---

Storage Comment: For short term use, store at 2-8°C up to 1 week. For long term storage, store at -20°C in small aliquots to prevent freeze-thaw cycles.

---



### Western Blotting

**Image 1.** Host: Rabbit Target Name: ANKRD10 Sample Type: U937 Whole Cell lysates Antibody Dilution: 1.0ug/ml