



Datasheet for ABIN2791128  
**anti-GPATCH2L antibody (Middle Region)**



[Go to Product page](#)

1 Image

Overview

Quantity:	100 µL
Target:	GPATCH2L
Binding Specificity:	Middle Region
Reactivity:	Human, Mouse, Rabbit, Rat, Cow, Dog, Guinea Pig, Horse
Host:	Rabbit
Clonality:	Polyclonal
Conjugate:	This GPATCH2L antibody is un-conjugated
Application:	Western Blotting (WB)

Product Details

Immunogen:	The immunogen is a synthetic peptide directed towards the middle region of Human GPATCH2L
Sequence:	SRWKENTPWT SSGHGLCESA ENRTFLSKTG RKERMECETD EQKQGSDENM
Predicted Reactivity:	Cow: 93%, Dog: 93%, Guinea Pig: 100%, Horse: 93%, Human: 100%, Mouse: 82%, Rabbit: 85%, Rat: 100%
Characteristics:	This is a rabbit polyclonal antibody against GPATCH2L. It was validated on Western Blot.
Purification:	Affinity Purified

Target Details

Target:	GPATCH2L
---------	----------

## Target Details

---

Alternative Name:	GPATCH2L ( <a href="#">GPATCH2L Products</a> )
Background:	<p>The function of this protein remains unknown.</p> <p>Alias Symbols: -</p> <p>Protein Interaction Partner: ZBTB8A, KRTAP10-9, KRT40, TRIM41, LZTS2, KRTAP4-12, CEP70, CCDC33, ZNF408, PRDM14, ZNF398, THAP1, ZNF473, DIP2A, RBPMS, ZNF263, ZNF165, MEOX2, MDFI, ZBTB48, PRMT8, KDM1A, SUV39H1, PRMT1,</p> <p>Protein Size: 482</p>
Molecular Weight:	54 kDa
Gene ID:	55668
NCBI Accession:	<a href="#">NM_017926</a> , <a href="#">NP_060396</a>
UniProt:	<a href="#">Q9NWQ4</a>

## Application Details

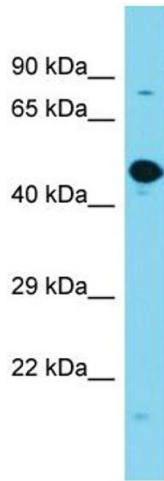
---

Application Notes:	Optimal working dilutions should be determined experimentally by the investigator.
Comment:	Antigen size: 482 AA
Restrictions:	For Research Use only

## Handling

---

Format:	Liquid
Concentration:	Lot specific
Buffer:	Liquid. Purified antibody supplied in 1x PBS buffer with 0.09 % (w/v) sodium azide and 2 % sucrose.
Preservative:	Sodium azide
Precaution of Use:	This product contains Sodium azide: a POISONOUS AND HAZARDOUS SUBSTANCE which should be handled by trained staff only.
Handling Advice:	Avoid repeated freeze-thaw cycles.
Storage:	-20 °C
Storage Comment:	For short term use, store at 2-8°C up to 1 week. For long term storage, store at -20°C in small aliquots to prevent freeze-thaw cycles.



### Western Blotting

**Image 1.** Host: Rabbit Target Name: GPATCH2L Sample Type: Fetal Brain lysates Antibody Dilution: 1.0ug/ml