



[Go to Product page](#)

Datasheet for ABIN2791133
anti-CBWD1 antibody (N-Term)

1 Image

Overview

Quantity:	100 µL
Target:	CBWD1
Binding Specificity:	N-Term
Reactivity:	Human, Rat, Dog, Mouse, Cow, Guinea Pig, Horse, Rabbit, Saccharomyces cerevisiae, Zebrafish (Danio rerio)
Host:	Rabbit
Clonality:	Polyclonal
Conjugate:	This CBWD1 antibody is un-conjugated
Application:	Western Blotting (WB)

Product Details

Immunogen:	The immunogen is a synthetic peptide directed towards the N-terminal region of Human CBWD1
Sequence:	GAVASMFWVD AELGSDIYLD GIITIVDSKY GLKHLTEEKP DGLINEATRQ
Predicted Reactivity:	Cow: 93%, Dog: 93%, Guinea Pig: 100%, Horse: 93%, Human: 100%, Mouse: 100%, Rabbit: 93%, Rat: 100%, Yeast: 79%, Zebrafish: 85%
Characteristics:	This is a rabbit polyclonal antibody against CBWD1. It was validated on Western Blot.
Purification:	Affinity Purified

Target Details

Target:	CBWD1
---------	-------

Target Details

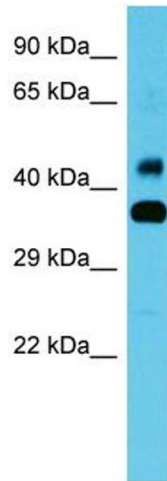
Alternative Name:	CBWD1 (CBWD1 Products)
Background:	The function of this protein remains unknown. Alias Symbols: COBP Protein Interaction Partner: UBC, UBD, Protein Size: 359
Molecular Weight:	39 kDa
Gene ID:	55871
NCBI Accession:	NM_001145355 , NP_001138827
UniProt:	Q9BRT8

Application Details

Application Notes:	Optimal working dilutions should be determined experimentally by the investigator.
Comment:	Antigen size: 359 AA
Restrictions:	For Research Use only

Handling

Format:	Liquid
Concentration:	Lot specific
Buffer:	Liquid. Purified antibody supplied in 1x PBS buffer with 0.09 % (w/v) sodium azide and 2 % sucrose.
Preservative:	Sodium azide
Precaution of Use:	This product contains Sodium azide: a POISONOUS AND HAZARDOUS SUBSTANCE which should be handled by trained staff only.
Handling Advice:	Avoid repeated freeze-thaw cycles.
Storage:	-20 °C
Storage Comment:	For short term use, store at 2-8°C up to 1 week. For long term storage, store at -20°C in small aliquots to prevent freeze-thaw cycles.



Western Blotting

Image 1. Host: Rabbit Target Name: CBWD1 Sample Type: Fetal Heart lysates Antibody Dilution: 1.0ug/ml