

Datasheet for ABIN2791135
anti-UBFD1 antibody (Middle Region)



[Go to Product page](#)

1 Image

Overview

Quantity:	100 µL
Target:	UBFD1
Binding Specificity:	Middle Region
Reactivity:	Human, Mouse, Rat, Cow, Rabbit, Guinea Pig, Horse, Dog, Zebrafish (Danio rerio), Pig
Host:	Rabbit
Clonality:	Polyclonal
Conjugate:	This UBFD1 antibody is un-conjugated
Application:	Western Blotting (WB)

Product Details

Immunogen:	The immunogen is a synthetic peptide directed towards the middle region of Human UBFD1
Sequence:	VGSTINDVLA VNTPKDAAQQ DAKAEENKKE PLCRQKQHRK VLDKGKPEDV
Predicted Reactivity:	Cow: 100%, Dog: 100%, Guinea Pig: 93%, Horse: 93%, Human: 100%, Mouse: 100%, Pig: 100%, Rabbit: 100%, Rat: 100%, Zebrafish: 83%
Characteristics:	This is a rabbit polyclonal antibody against UBFD1. It was validated on Western Blot.
Purification:	Affinity Purified

Target Details

Target:	UBFD1
Alternative Name:	UBFD1 (UBFD1 Products)

Target Details

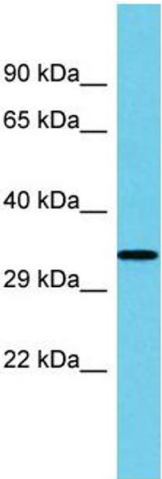
Background:	UBFD1 may play a role as NF-kappa-B regulator. Alias Symbols: UBPH Protein Interaction Partner: SHFM1, UBC, ZNF622, CNDP2, SCLY, ISOC1, ERP44, FERMT2, YWHAQ, NPEPPS, SLC9A3R1, YWHAH, YWHAG, VCL, TGM2, SNRPF, PAK2, LDHB, HNRNPK, GNS, GNAI3, G6PD, EIF5, CSE1L, TBCB, CKB, UBE2S, PSMC3, Protein Size: 309
Molecular Weight:	33 kDa
Gene ID:	56061
NCBI Accession:	NM_019116 , NP_061989
UniProt:	O14562

Application Details

Application Notes:	Optimal working dilutions should be determined experimentally by the investigator.
Comment:	Antigen size: 309 AA
Restrictions:	For Research Use only

Handling

Format:	Liquid
Concentration:	Lot specific
Buffer:	Liquid. Purified antibody supplied in 1x PBS buffer with 0.09 % (w/v) sodium azide and 2 % sucrose.
Preservative:	Sodium azide
Precaution of Use:	This product contains Sodium azide: a POISONOUS AND HAZARDOUS SUBSTANCE which should be handled by trained staff only.
Handling Advice:	Avoid repeated freeze-thaw cycles.
Storage:	-20 °C
Storage Comment:	For short term use, store at 2-8°C up to 1 week. For long term storage, store at -20°C in small aliquots to prevent freeze-thaw cycles.



Western Blotting

Image 1. Host: Rabbit Target Name: UBFD1 Sample Type: Fetal Kidney lysates Antibody Dilution: 1.0ug/ml