



[Go to Product page](#)

Datasheet for ABIN2791140
anti-SMCO4 antibody (N-Term)

1 Image

Overview

Quantity:	100 µL
Target:	SMCO4
Binding Specificity:	N-Term
Reactivity:	Guinea Pig, Human, Rabbit, Cow, Mouse, Rat, Saccharomyces cerevisiae
Host:	Rabbit
Clonality:	Polyclonal
Conjugate:	This SMCO4 antibody is un-conjugated
Application:	Western Blotting (WB)

Product Details

Immunogen:	The immunogen is a synthetic peptide directed towards the N-terminal region of Human C11orf75
Sequence:	KPKKETSKDK KERKQAMQEA RQQTIVVLP TLAWVLLIV VFVYVATRPT
Predicted Reactivity:	Cow: 93%, Guinea Pig: 100%, Human: 100%, Mouse: 100%, Rabbit: 100%, Rat: 100%, Yeast: 79%
Characteristics:	This is a rabbit polyclonal antibody against C11orf75. It was validated on Western Blot.
Purification:	Affinity Purified

Target Details

Target:	SMCO4
Alternative Name:	C11orf75 (SMCO4 Products)

Target Details

Background: The function of this protein remains unknown.
Alias Symbols: FN5, C11orf75
Protein Interaction Partner: KRTAP10-3, KRTAP10-7, SYNE4, CCDC155, KRT40, BNIP3L,
Protein Size: 59

Molecular Weight: 6 kDa

Gene ID: 56935

NCBI Accession: [NM_020179](#), [NP_064564](#)

UniProt: [Q9NRQ5](#)

Application Details

Application Notes: Optimal working dilutions should be determined experimentally by the investigator.

Comment: Antigen size: 59 AA

Restrictions: For Research Use only

Handling

Format: Liquid

Concentration: Lot specific

Buffer: Liquid. Purified antibody supplied in 1x PBS buffer with 0.09 % (w/v) sodium azide and 2 % sucrose.

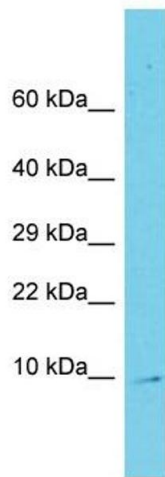
Preservative: Sodium azide

Precaution of Use: This product contains Sodium azide: a POISONOUS AND HAZARDOUS SUBSTANCE which should be handled by trained staff only.

Handling Advice: Avoid repeated freeze-thaw cycles.

Storage: -20 °C

Storage Comment: For short term use, store at 2-8°C up to 1 week. For long term storage, store at -20°C in small aliquots to prevent freeze-thaw cycles.



Western Blotting

Image 1. Host: Rabbit Target Name: C11orf75 Sample Type: Fetal Liver lysates Antibody Dilution: 1.0ug/ml