



[Go to Product page](#)

Datasheet for ABIN2791147

anti-ANKRD36B antibody (C-Term)

1 Image

Overview

Quantity:	100 µL
Target:	ANKRD36B
Binding Specificity:	C-Term
Reactivity:	Human
Host:	Rabbit
Clonality:	Polyclonal
Conjugate:	This ANKRD36B antibody is un-conjugated
Application:	Western Blotting (WB)

Product Details

Immunogen:	The immunogen is a synthetic peptide directed towards the C-terminal region of Human ANKRD36B
Sequence:	LLDASSRHCT YLENGMQDSR KKLDQMRSQF QEIQDQLTAT IRCTKEMEGD
Predicted Reactivity:	Human: 100%
Characteristics:	This is a rabbit polyclonal antibody against ANKRD36B. It was validated on Western Blot.
Purification:	Affinity Purified

Target Details

Target:	ANKRD36B
Alternative Name:	ANKRD36B (ANKRD36B Products)

Target Details

Background: The function of this protein remains unknown.
Alias Symbols: KIAA1641
Protein Interaction Partner: FAM9B,
Protein Size: 1353

Molecular Weight: 153 kDa

Gene ID: 57730

NCBI Accession: [NM_025190](#), [NP_079466](#)

UniProt: [Q8N2N9](#)

Application Details

Application Notes: Optimal working dilutions should be determined experimentally by the investigator.

Comment: Antigen size: 1353 AA

Restrictions: For Research Use only

Handling

Format: Liquid

Concentration: Lot specific

Buffer: Liquid. Purified antibody supplied in 1x PBS buffer with 0.09 % (w/v) sodium azide and 2 % sucrose.

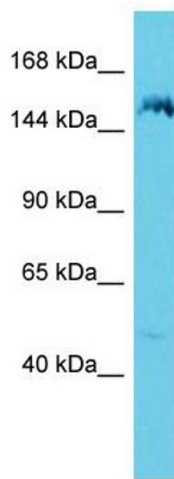
Preservative: Sodium azide

Precaution of Use: This product contains Sodium azide: a POISONOUS AND HAZARDOUS SUBSTANCE which should be handled by trained staff only.

Handling Advice: Avoid repeated freeze-thaw cycles.

Storage: -20 °C

Storage Comment: For short term use, store at 2-8°C up to 1 week. For long term storage, store at -20°C in small aliquots to prevent freeze-thaw cycles.



Western Blotting

Image 1. Host: Rabbit Target Name: ANKRD36B Sample Type: 721_B Whole Cell lysates Antibody Dilution: 1.0ug/ml