

Datasheet for ABIN2791154
anti-MRPL14 antibody (C-Term)[Go to Product page](#)

1 Image

Overview

Quantity:	100 µL
Target:	MRPL14
Binding Specificity:	C-Term
Reactivity:	Human, Mouse, Rat, Goat, Horse, Pig, Zebrafish (Danio rerio), Cow, Dog
Host:	Rabbit
Clonality:	Polyclonal
Conjugate:	This MRPL14 antibody is un-conjugated
Application:	Western Blotting (WB)

Product Details

Immunogen:	The immunogen is a synthetic peptide directed towards the C-terminal region of Human MRPL14
Sequence:	MTPRFDSNNV VLIEDNGNPV GTRIKTPIPT SLRKREGEYS KVLAI AQNFV
Predicted Reactivity:	Cow: 86%, Dog: 86%, Goat: 86%, Horse: 86%, Human: 100%, Mouse: 93%, Pig: 79%, Rat: 93%, Zebrafish: 85%
Characteristics:	This is a rabbit polyclonal antibody against MRPL14. It was validated on Western Blot.
Purification:	Affinity Purified

Target Details

Target:	MRPL14
---------	--------

Target Details

Alternative Name:	MRPL14 (MRPL14 Products)
Background:	<p>Mammalian mitochondrial ribosomal proteins are encoded by nuclear genes and help in protein synthesis within the mitochondrion. Mitochondrial ribosomes (mitoribosomes) consist of a small 28S subunit and a large 39S subunit. They have an estimated 75 % protein to rRNA composition compared to prokaryotic ribosomes, where this ratio is reversed. Another difference between mammalian mitoribosomes and prokaryotic ribosomes is that the latter contain a 5S rRNA. Among different species, the proteins comprising the mitoribosome differ greatly in sequence, and sometimes in biochemical properties, which prevents easy recognition by sequence homology. This gene encodes a 39S subunit protein. A pseudogene corresponding to this gene is found at 17p13.3.</p> <p>Alias Symbols: L14mt, L32mt, MRP-L14, MRP-L32, MRPL32, RMPL32, RPML32</p> <p>Protein Interaction Partner: RPS20, NDUFA7, MRPL53, GADD45GIP1, SARNP, MRPL38, MRPL40, MRPS14, SRPRB, CDV3, MRPS10, MRPL16, MRPL39, MRPL4, MRPL2, MRPL22, MRPL15, MRPL13, HNRNPR, PPIF, MRPL19, EEF1A1, DUT, TUFM, CUL3, UBC, ICT1,</p> <p>Protein Size: 145</p>
Molecular Weight:	15 kDa
Gene ID:	64928
NCBI Accession:	NM_032111 , NP_115487
UniProt:	Q6P1L8

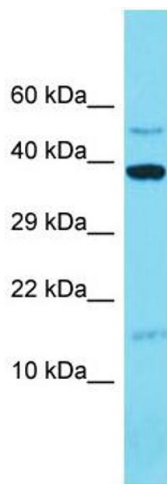
Application Details

Restrictions:	For Research Use only
Handling	
Format:	Liquid
Concentration:	1 mg/mL
Buffer:	Liquid. Purified antibody supplied in 1x PBS buffer with 0.09 % (w/v) sodium azide and 2 % sucrose.
Preservative:	Sodium azide
Precaution of Use:	This product contains Sodium azide: a POISONOUS AND HAZARDOUS SUBSTANCE which should be handled by trained staff only.

Handling

Handling Advice:	Avoid repeat freeze-thaw cycles.
Storage:	-20 °C
Storage Comment:	For short term use, store at 2-8°C up to 1 week. For long term storage, store at -20°C in small aliquots to prevent freeze-thaw cycles.

Images



Western Blotting

Image 1.