

Datasheet for ABIN2791155  
**anti-MRPS26 antibody (C-Term)**[Go to Product page](#)

## 1 Image

## Overview

Quantity:	100 µL
Target:	MRPS26
Binding Specificity:	C-Term
Reactivity:	Human, Rabbit, Cow, Dog, Horse, Pig, Saccharomyces cerevisiae, Zebrafish (Danio rerio)
Host:	Rabbit
Clonality:	Polyclonal
Conjugate:	This MRPS26 antibody is un-conjugated
Application:	Western Blotting (WB)

## Product Details

Immunogen:	The immunogen is a synthetic peptide directed towards the C-terminal region of Human MRPS26
Sequence:	RQALEQARKA EEVQAWAQRK EREVLQLQEE VKNFITRENL EARVEAALDS
Predicted Reactivity:	Cow: 82%, Dog: 86%, Horse: 86%, Human: 100%, Pig: 86%, Rabbit: 91%, Yeast: 83%, Zebrafish: 82%
Characteristics:	This is a rabbit polyclonal antibody against MRPS26. It was validated on Western Blot.
Purification:	Affinity Purified

## Target Details

Target:	MRPS26
---------	--------

## Target Details

Alternative Name:	MRPS26 ( <a href="#">MRPS26 Products</a> )
Background:	<p>Mammalian mitochondrial ribosomal proteins are encoded by nuclear genes and help in protein synthesis within the mitochondrion. Mitochondrial ribosomes (mitoribosomes) consist of a small 28S subunit and a large 39S subunit. They have an estimated 75 % protein to rRNA composition compared to prokaryotic ribosomes, where this ratio is reversed. Another difference between mammalian mitoribosomes and prokaryotic ribosomes is that the latter contain a 5S rRNA. Among different species, the proteins comprising the mitoribosome differ greatly in sequence, and sometimes in biochemical properties, which prevents easy recognition by sequence homology. This gene encodes a 28S subunit protein. This gene lies adjacent to and downstream of the gonadotropin-releasing hormone precursor gene.</p> <p>Alias Symbols: C20orf193, GI008, MRP-S13, MRP-S26, MRPS13, NY-BR-87, RPMS13, dJ534B8.3</p> <p>Protein Interaction Partner: NEDD1, CEP76, GRSF1, UBC, RNF2, SOX2, NPM1, C1QBP, HNRNPA3, DYNLRB1, MRPL32, MRPS9, MRPS35, MRPS22, TSR1, MRPS16, MRPL42, MRPS18B, MRPS28, HNRNPR, SRSF9, SNRNP70, MRPL12, SLC25A3, NDUFB5, NCL, MGST3, ILF2, CPS1, ABCC2, CAND1, CUL1, CUL3, LMNA, Ybx1, ICT1,</p> <p>Protein Size: 205</p>
Molecular Weight:	24 kDa
Gene ID:	64949
NCBI Accession:	<a href="#">NM_030811</a> , <a href="#">NP_110438</a>
UniProt:	<a href="#">Q9BYN8</a>

## Application Details

Application Notes:	Optimal working dilutions should be determined experimentally by the investigator.
Comment:	Antigen size: 205 AA
Restrictions:	For Research Use only

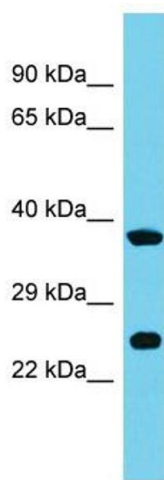
## Handling

Format:	Liquid
Concentration:	Lot specific
Buffer:	Liquid. Purified antibody supplied in 1x PBS buffer with 0.09 % (w/v) sodium azide and 2 % sucrose.

## Handling

Preservative:	Sodium azide
Precaution of Use:	This product contains Sodium azide: a POISONOUS AND HAZARDOUS SUBSTANCE which should be handled by trained staff only.
Handling Advice:	Avoid repeated freeze-thaw cycles.
Storage:	-20 °C
Storage Comment:	For short term use, store at 2-8°C up to 1 week. For long term storage, store at -20°C in small aliquots to prevent freeze-thaw cycles.

## Images



### Western Blotting

**Image 1.** Host: Rabbit Target Name: MRPS26 Sample Type: 721\_B Whole Cell lysates Antibody Dilution: 1.0ug/ml