

Datasheet for ABIN2791157  
**anti-PYCRL antibody (N-Term)**



[Go to Product page](#)

1 Image

## Overview

Quantity:	100 µL
Target:	PYCRL
Binding Specificity:	N-Term
Reactivity:	Human, Rat, Cow, Dog, Guinea Pig, Horse, Mouse
Host:	Rabbit
Clonality:	Polyclonal
Conjugate:	This PYCRL antibody is un-conjugated
Application:	Western Blotting (WB)

## Product Details

Immunogen:	The immunogen is a synthetic peptide directed towards the N-terminal region of Human PYCRL
Sequence:	LIRAGKVEAQ HILASAPTDR NLCHFQALGC RTTHSNQEV L QSCLLVIFAT
Predicted Reactivity:	Cow: 79%, Dog: 93%, Guinea Pig: 92%, Horse: 93%, Human: 100%, Mouse: 85%, Rat: 100%
Characteristics:	This is a rabbit polyclonal antibody against PYCRL. It was validated on Western Blot.
Purification:	Affinity Purified

## Target Details

Target:	PYCRL
Alternative Name:	PYCRL ( <a href="#">PYCRL Products</a> )
Background:	The function of this protein remains unknown.

## Target Details

---

Alias Symbols: -

Protein Interaction Partner: SDCBP, FUS, PYCRL, SUMO2, DGCR8, PRMT6, PSMB5, PSMB3, PSMB2, PSMB1, PSMA7, PSMA6, PSMA4, CDKN2B, UBC, LBP, CUL3, UIMC1, BABAM1,

Protein Size: 286

---

Molecular Weight: 29 kDa

---

Gene ID: 65263

---

NCBI Accession: [NM\\_023078](#), [NP\\_075566](#)

---

UniProt: [D3DWK4](#)

## Application Details

---

Application Notes: Optimal working dilutions should be determined experimentally by the investigator.

---

Comment: Antigen size: 286 AA

---

Restrictions: For Research Use only

## Handling

---

Format: Liquid

---

Concentration: Lot specific

---

Buffer: Liquid. Purified antibody supplied in 1x PBS buffer with 0.09 % (w/v) sodium azide and 2 % sucrose.

---

Preservative: Sodium azide

---

Precaution of Use: This product contains Sodium azide: a POISONOUS AND HAZARDOUS SUBSTANCE which should be handled by trained staff only.

---

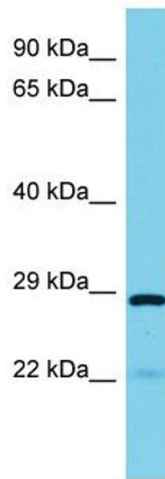
Handling Advice: Avoid repeated freeze-thaw cycles.

---

Storage: -20 °C

---

Storage Comment: For short term use, store at 2-8°C up to 1 week. For long term storage, store at -20°C in small aliquots to prevent freeze-thaw cycles.



### Western Blotting

**Image 1.** Host: Rabbit Target Name: PYCRL Sample Type: Fetal Kidney lysates Antibody Dilution: 1.0ug/ml