

Datasheet for ABIN2791166
anti-C11ORF49 antibody (C-Term)[Go to Product page](#)

1 Image

Overview

| | |
|----------------------|---|
| Quantity: | 100 µL |
| Target: | C11ORF49 |
| Binding Specificity: | C-Term |
| Reactivity: | Human, Rat, Mouse, Rabbit, Dog, Guinea Pig, Horse |
| Host: | Rabbit |
| Clonality: | Polyclonal |
| Conjugate: | This C11ORF49 antibody is un-conjugated |
| Application: | Western Blotting (WB) |

Product Details

| | |
|-----------------------|---|
| Immunogen: | The immunogen is a synthetic peptide directed towards the C-terminal region of Human C11orf49 |
| Sequence: | GLVNSVTASP EASCLPSRTP PRVGSPWRPL HHSRKVDGES DGSTEETDES |
| Predicted Reactivity: | Dog: 92%, Guinea Pig: 92%, Horse: 92%, Human: 100%, Mouse: 86%, Rabbit: 93%, Rat: 92% |
| Characteristics: | This is a rabbit polyclonal antibody against C11orf49. It was validated on Western Blot. |
| Purification: | Affinity Purified |

Target Details

| | |
|-------------------|--|
| Target: | C11ORF49 |
| Alternative Name: | C11orf49 (C11ORF49 Products) |

Target Details

| | |
|-------------|--|
| Background: | The function of this protein remains unknown. Alias Symbols: - Protein Interaction Partner: PNMA5, RAB17, RAB29, CDC16, UBC, GSR, UBQLN4, UBE3A, RPL8, RBM48, ARHGEF15, PSMA1, RPS3A, Protein Size: 331 |
|-------------|--|

| | |
|-------------------|--------|
| Molecular Weight: | 37 kDa |
|-------------------|--------|

| | |
|----------|-------|
| Gene ID: | 79096 |
|----------|-------|

| | |
|-----------------|---|
| NCBI Accession: | NM_024113 , NP_077018 |
|-----------------|---|

| | |
|----------|------------------------|
| UniProt: | Q9H6J7 |
|----------|------------------------|

Application Details

| | |
|--------------------|--|
| Application Notes: | Optimal working dilutions should be determined experimentally by the investigator. |
|--------------------|--|

| | |
|----------|----------------------|
| Comment: | Antigen size: 331 AA |
|----------|----------------------|

| | |
|---------------|-----------------------|
| Restrictions: | For Research Use only |
|---------------|-----------------------|

Handling

| | |
|---------|--------|
| Format: | Liquid |
|---------|--------|

| | |
|----------------|--------------|
| Concentration: | Lot specific |
|----------------|--------------|

| | |
|---------|---|
| Buffer: | Liquid. Purified antibody supplied in 1x PBS buffer with 0.09 % (w/v) sodium azide and 2 % sucrose. |
|---------|---|

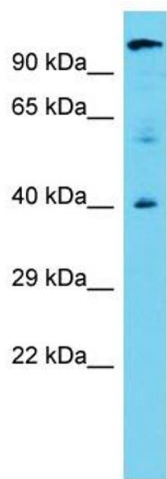
| | |
|---------------|--------------|
| Preservative: | Sodium azide |
|---------------|--------------|

| | |
|--------------------|--|
| Precaution of Use: | This product contains Sodium azide: a POISONOUS AND HAZARDOUS SUBSTANCE which should be handled by trained staff only. |
|--------------------|--|

| | |
|------------------|------------------------------------|
| Handling Advice: | Avoid repeated freeze-thaw cycles. |
|------------------|------------------------------------|

| | |
|----------|--------|
| Storage: | -20 °C |
|----------|--------|

| | |
|------------------|---|
| Storage Comment: | For short term use, store at 2-8°C up to 1 week. For long term storage, store at -20°C in small aliquots to prevent freeze-thaw cycles. |
|------------------|---|



Western Blotting

Image 1. Host: Rabbit Target Name: C11orf49 Sample Type: 721_B Whole Cell lysates Antibody Dilution: 1.0ug/ml