

Datasheet for ABIN2791169  
**anti-CCNJL antibody (Middle Region)**



[Go to Product page](#)

1 Image

## Overview

Quantity:	100 µL
Target:	CCNJL
Binding Specificity:	Middle Region
Reactivity:	Human, Mouse, Cow, Horse, Rat, Dog, Guinea Pig, Rabbit, Zebrafish (Danio rerio)
Host:	Rabbit
Clonality:	Polyclonal
Conjugate:	This CCNJL antibody is un-conjugated
Application:	Western Blotting (WB)

## Product Details

Immunogen:	The immunogen is a synthetic peptide directed towards the middle region of human CCNJ
Sequence:	YLLDHFMDRY NVTTSKQLYT V AVSCLLLASK FEDREDHVPK LEQINSTR
Predicted Reactivity:	Cow: 100%, Dog: 100%, Guinea Pig: 100%, Horse: 100%, Human: 100%, Mouse: 92%, Rabbit: 92%, Rat: 100%, Zebrafish: 85%
Characteristics:	This is a rabbit polyclonal antibody against CCNJL. It was validated on Western Blot.
Purification:	Affinity Purified

## Target Details

Target:	CCNJL
---------	-------

## Target Details

---

Alternative Name:	CCNJL ( <a href="#">CCNJL Products</a> )
Background:	Alias Symbols: bA690P14.1 Protein Size: 189
Molecular Weight:	20 kDa
Gene ID:	54619
NCBI Accession:	<a href="#">NM_001134375</a> , <a href="#">NP_001127847</a>
UniProt:	<a href="#">Q5T5M9</a>

## Application Details

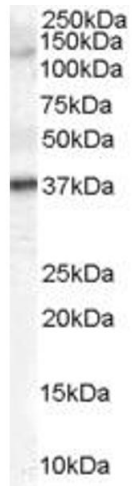
---

Restrictions:	For Research Use only
---------------	-----------------------

## Handling

---

Format:	Liquid
Concentration:	1 mg/mL
Buffer:	Liquid. Purified antibody supplied in 1x PBS buffer with 0.09 % (w/v) sodium azide and 2 % sucrose.
Preservative:	Sodium azide
Precaution of Use:	This product contains Sodium azide: a POISONOUS AND HAZARDOUS SUBSTANCE which should be handled by trained staff only.
Handling Advice:	Avoid repeat freeze-thaw cycles.
Storage:	-20 °C
Storage Comment:	For short term use, store at 2-8°C up to 1 week. For long term storage, store at -20°C in small aliquots to prevent freeze-thaw cycles.



### Western Blotting

Image 1.