



[Go to Product page](#)

Datasheet for ABIN2791170
anti-C6ORF211 antibody (N-Term)

1 Image

Overview

Quantity:	100 µL
Target:	C6ORF211
Binding Specificity:	N-Term
Reactivity:	Human, Mouse, Rat, Dog, Guinea Pig, Horse, Rabbit
Host:	Rabbit
Clonality:	Polyclonal
Conjugate:	This C6ORF211 antibody is un-conjugated
Application:	Western Blotting (WB)

Product Details

Immunogen:	The immunogen is a synthetic peptide directed towards the N-terminal region of Human C6orf211
Sequence:	SDGKSRWFYS PWLLVECYMY RRIHEAIIQS PPIDYFDVFK ESKEQNFYGS
Predicted Reactivity:	Dog: 86%, Guinea Pig: 79%, Horse: 79%, Human: 100%, Mouse: 79%, Rabbit: 79%, Rat: 79%
Characteristics:	This is a rabbit polyclonal antibody against C6orf211. It was validated on Western Blot.
Purification:	Affinity Purified

Target Details

Target:	C6ORF211
Alternative Name:	C6orf211 (C6ORF211 Products)

Target Details

Background: The function of this protein remains unknown.
Alias Symbols: -
Protein Interaction Partner: SUMO1, UBC, NEDD8, SAP18,
Protein Size: 441

Molecular Weight: 51 kDa

Gene ID: 79624

NCBI Accession: [NM_024573](#), [NP_078849](#)

UniProt: [Q9H993](#)

Application Details

Application Notes: Optimal working dilutions should be determined experimentally by the investigator.

Comment: Antigen size: 441 AA

Restrictions: For Research Use only

Handling

Format: Liquid

Concentration: Lot specific

Buffer: Liquid. Purified antibody supplied in 1x PBS buffer with 0.09 % (w/v) sodium azide and 2 % sucrose.

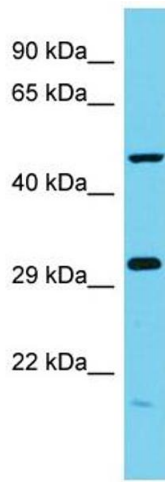
Preservative: Sodium azide

Precaution of Use: This product contains Sodium azide: a POISONOUS AND HAZARDOUS SUBSTANCE which should be handled by trained staff only.

Handling Advice: Avoid repeated freeze-thaw cycles.

Storage: -20 °C

Storage Comment: For short term use, store at 2-8°C up to 1 week. For long term storage, store at -20°C in small aliquots to prevent freeze-thaw cycles.



Western Blotting

Image 1. Host: Rabbit Target Name: C6orf211 Sample Type: MCF7 Whole Cell lysates Antibody Dilution: 1.0ug/ml C6orf211 is supported by BioGPS gene expression data to be expressed in MCF7