

Datasheet for ABIN2791173

anti-CCDC121 antibody (Middle Region)[Go to Product page](#)**1** Image

Overview

Quantity:	100 µL
Target:	CCDC121
Binding Specificity:	Middle Region
Reactivity:	Human, Horse
Host:	Rabbit
Clonality:	Polyclonal
Conjugate:	This CCDC121 antibody is un-conjugated
Application:	Western Blotting (WB)

Product Details

Immunogen:	The immunogen is a synthetic peptide directed towards the middle region of Human CCDC121
Sequence:	ENRFFLEYLT NKTEEYTEQP EKVWNSYLQK SGEIERRRQE SASRYAEQIS
Predicted Reactivity:	Horse: 93%, Human: 100%
Characteristics:	This is a rabbit polyclonal antibody against CCDC121. It was validated on Western Blot.
Purification:	Affinity Purified

Target Details

Target:	CCDC121
Alternative Name:	CCDC121 (CCDC121 Products)
Background:	The function of this protein remains unknown.

Target Details

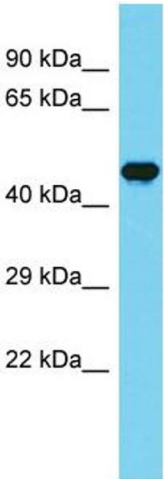
	Alias Symbols: - Protein Interaction Partner: TFIP11, NUP62, USHBP1, RINT1, KDM1A, Protein Size: 440
Molecular Weight:	50 kDa
Gene ID:	79635
NCBI Accession:	NM_001142683 , NP_001136155
UniProt:	J3KQZ8

Application Details

Application Notes:	Optimal working dilutions should be determined experimentally by the investigator.
Comment:	Antigen size: 440 AA
Restrictions:	For Research Use only

Handling

Format:	Liquid
Concentration:	Lot specific
Buffer:	Liquid. Purified antibody supplied in 1x PBS buffer with 0.09 % (w/v) sodium azide and 2 % sucrose.
Preservative:	Sodium azide
Precaution of Use:	This product contains Sodium azide: a POISONOUS AND HAZARDOUS SUBSTANCE which should be handled by trained staff only.
Handling Advice:	Avoid repeated freeze-thaw cycles.
Storage:	-20 °C
Storage Comment:	For short term use, store at 2-8°C up to 1 week. For long term storage, store at -20°C in small aliquots to prevent freeze-thaw cycles.



Western Blotting

Image 1. Host: Rabbit Target Name: CCDC121 Sample Type: Fetal Brain lysates Antibody Dilution: 1.0ug/ml