



Datasheet for ABIN2791176
anti-MSANTD2 antibody (N-Term)



[Go to Product page](#)

1 Image

Overview

Quantity:	100 µL
Target:	MSANTD2
Binding Specificity:	N-Term
Reactivity:	Human, Mouse, Rabbit, Rat, Zebrafish (Danio rerio), Cow, Dog, Guinea Pig, Horse
Host:	Rabbit
Clonality:	Polyclonal
Conjugate:	This MSANTD2 antibody is un-conjugated
Application:	Western Blotting (WB)

Product Details

Immunogen:	The immunogen is a synthetic peptide directed towards the N-terminal region of Human MSANTD2
Sequence:	LAELGYERTP SQCRERIKEL ESDGSTMEDY SQEDWGNHSQ DLHGYPTDQE
Predicted Reactivity:	Cow: 93%, Dog: 86%, Guinea Pig: 100%, Horse: 93%, Human: 100%, Mouse: 100%, Rabbit: 100%, Rat: 100%, Zebrafish: 100%
Characteristics:	This is a rabbit polyclonal antibody against MSANTD2. It was validated on Western Blot.
Purification:	Affinity Purified

Target Details

Target:	MSANTD2
---------	---------

Target Details

Alternative Name: MSANTD2 ([MSANTD2 Products](#))

Background: The function of this protein remains unknown.
Alias Symbols: C11orf61
Protein Interaction Partner: ERCC3, STRN4,
Protein Size: 507

Molecular Weight: 55 kDa

Gene ID: 79684

NCBI Accession: [NM_024631](#), [NP_078907](#)

Application Details

Application Notes: Optimal working dilutions should be determined experimentally by the investigator.

Comment: Antigen size: 507 AA

Restrictions: For Research Use only

Handling

Format: Liquid

Concentration: Lot specific

Buffer: Liquid. Purified antibody supplied in 1x PBS buffer with 0.09 % (w/v) sodium azide and 2 % sucrose.

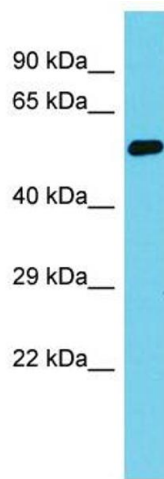
Preservative: Sodium azide

Precaution of Use: This product contains Sodium azide: a POISONOUS AND HAZARDOUS SUBSTANCE which should be handled by trained staff only.

Handling Advice: Avoid repeated freeze-thaw cycles.

Storage: -20 °C

Storage Comment: For short term use, store at 2-8°C up to 1 week. For long term storage, store at -20°C in small aliquots to prevent freeze-thaw cycles.



Western Blotting

Image 1. Host: Rabbit Target Name: MSANTD2 Sample Type: Fetal Heart lysates Antibody Dilution: 1.0ug/ml