

Datasheet for ABIN2791184
anti-SHCBP1 antibody (C-Term)



[Go to Product page](#)

1 Image

Overview

Quantity:	100 µL
Target:	SHCBP1
Binding Specificity:	C-Term
Reactivity:	Human, Cow, Pig, Rabbit
Host:	Rabbit
Clonality:	Polyclonal
Conjugate:	This SHCBP1 antibody is un-conjugated
Application:	Western Blotting (WB)

Product Details

Immunogen:	The immunogen is a synthetic peptide directed towards the C-terminal region of Human SHCBP1
Sequence:	IPKISMVNNI IHNNEGYGVV LVKPTIFSDL QENAEDGTEE NKALKIQTSG
Predicted Reactivity:	Cow: 79%, Human: 100%, Pig: 93%, Rabbit: 86%
Characteristics:	This is a rabbit polyclonal antibody against SHCBP1. It was validated on Western Blot.
Purification:	Affinity Purified

Target Details

Target:	SHCBP1
Alternative Name:	SHCBP1 (SHCBP1 Products)

Target Details

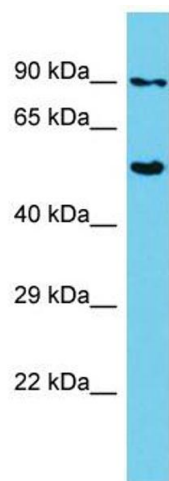
Background:	SHCBP1 may play a role in signaling pathways governing cellular proliferation, cell growth and differentiation. It may be a component of a novel signaling pathway downstream of Shc. Alias Symbols: PAL Protein Interaction Partner: UBC, SOX2, SRSF11, SH3KBP1, Fgfr1op, Kif23, Dctn2, Racgap1, Shcbp1, Cd2ap, YWHAG, CENPA, USP49, ZUFSP, SHC1, SFN, Protein Size: 672
Molecular Weight:	75 kDa
Gene ID:	79801
NCBI Accession:	NM_024745 , NP_079021
UniProt:	Q8NEM2

Application Details

Application Notes:	Optimal working dilutions should be determined experimentally by the investigator.
Comment:	Antigen size: 672 AA
Restrictions:	For Research Use only

Handling

Format:	Liquid
Concentration:	Lot specific
Buffer:	Liquid. Purified antibody supplied in 1x PBS buffer with 0.09 % (w/v) sodium azide and 2 % sucrose.
Preservative:	Sodium azide
Precaution of Use:	This product contains Sodium azide: a POISONOUS AND HAZARDOUS SUBSTANCE which should be handled by trained staff only.
Handling Advice:	Avoid repeated freeze-thaw cycles.
Storage:	-20 °C
Storage Comment:	For short term use, store at 2-8°C up to 1 week. For long term storage, store at -20°C in small aliquots to prevent freeze-thaw cycles.



Western Blotting

Image 1. Host: Rabbit Target Name: SHCBP1 Sample Type: HepG2 Whole Cell lysates Antibody Dilution: 1.0ug/ml