



[Go to Product page](#)

Datasheet for ABIN2791185
anti-EFCC1 antibody (C-Term)

1 Image

Overview

Quantity:	100 µL
Target:	EFCC1 (CCDC48)
Binding Specificity:	C-Term
Reactivity:	Human, Rat
Host:	Rabbit
Clonality:	Polyclonal
Conjugate:	This EFCC1 antibody is un-conjugated
Application:	Western Blotting (WB)

Product Details

Immunogen:	The immunogen is a synthetic peptide directed towards the C-terminal region of Human CCDC48
Sequence:	LEAELQRYRS EDSQLPTPQL ANPEPGDKSN EPEDAGTRDP DPTPEGAWQS
Predicted Reactivity:	Human: 100%, Rat: 77%
Characteristics:	This is a rabbit polyclonal antibody against CCDC48. It was validated on Western Blot.
Purification:	Affinity Purified

Target Details

Target:	EFCC1 (CCDC48)
Alternative Name:	CCDC48 (CCDC48 Products)

Target Details

Background: The function of this protein remains unknown.
Alias Symbols: C3orf73, CCDC48
Protein Interaction Partner: CUL1,
Protein Size: 598

Molecular Weight: 65 kDa

Gene ID: 79825

NCBI Accession: [NM_024768](#), [NP_079044](#)

UniProt: [Q9HA90](#)

Application Details

Application Notes: Optimal working dilutions should be determined experimentally by the investigator.

Comment: Antigen size: 598 AA

Restrictions: For Research Use only

Handling

Format: Liquid

Concentration: Lot specific

Buffer: Liquid. Purified antibody supplied in 1x PBS buffer with 0.09 % (w/v) sodium azide and 2 % sucrose.

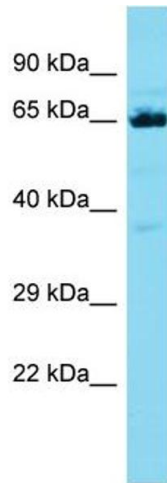
Preservative: Sodium azide

Precaution of Use: This product contains Sodium azide: a POISONOUS AND HAZARDOUS SUBSTANCE which should be handled by trained staff only.

Handling Advice: Avoid repeated freeze-thaw cycles.

Storage: -20 °C

Storage Comment: For short term use, store at 2-8°C up to 1 week. For long term storage, store at -20°C in small aliquots to prevent freeze-thaw cycles.



Western Blotting

Image 1. Host: Rabbit Target Name: CCDC48 Sample Type: HT1080 Whole Cell lysates Antibody Dilution: 1.0ug/ml