

Datasheet for ABIN2791189
anti-SLC35E1 antibody (C-Term)[Go to Product page](#)

1 Image

Overview

Quantity:	100 µL
Target:	SLC35E1
Binding Specificity:	C-Term
Reactivity:	Human, Cow, Dog, Horse, Pig
Host:	Rabbit
Clonality:	Polyclonal
Conjugate:	This SLC35E1 antibody is un-conjugated
Application:	Western Blotting (WB)

Product Details

Immunogen:	The immunogen is a synthetic peptide directed towards the C-terminal region of Human SLC35E1
Sequence:	MMTAILGVFL YNKT KYDANQ QARKHLLPVT TADLSSKERH RSPLEKPHNG
Predicted Reactivity:	Cow: 93%, Dog: 86%, Horse: 93%, Human: 100%, Pig: 93%
Characteristics:	This is a rabbit polyclonal antibody against SLC35E1. It was validated on Western Blot.
Purification:	Affinity Purified

Target Details

Target:	SLC35E1
Alternative Name:	SLC35E1 (SLC35E1 Products)

Target Details

Background: SLC35E1 is a putative transporter.
Alias Symbols: -
Protein Interaction Partner: UBC, HECW2, ABCF3, FXYD6, MCOLN1, LAMA3,
Protein Size: 410

Molecular Weight: 44 kDa

Gene ID: 79939

NCBI Accession: [NM_024881](#), [NP_079157](#)

UniProt: [Q96K37](#)

Application Details

Application Notes: Optimal working dilutions should be determined experimentally by the investigator.

Comment: Antigen size: 410 AA

Restrictions: For Research Use only

Handling

Format: Liquid

Concentration: Lot specific

Buffer: Liquid. Purified antibody supplied in 1x PBS buffer with 0.09 % (w/v) sodium azide and 2 % sucrose.

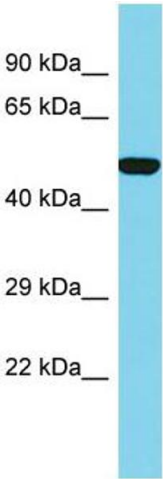
Preservative: Sodium azide

Precaution of Use: This product contains Sodium azide: a POISONOUS AND HAZARDOUS SUBSTANCE which should be handled by trained staff only.

Handling Advice: Avoid repeated freeze-thaw cycles.

Storage: -20 °C

Storage Comment: For short term use, store at 2-8°C up to 1 week. For long term storage, store at -20°C in small aliquots to prevent freeze-thaw cycles.



Western Blotting

Image 1. Host: Rabbit Target Name: SLC35E1 Sample Type: 293T Whole Cell lysates Antibody Dilution: 1.0ug/ml
There is BioGPS gene expression data showing that SLC35E1 is expressed in HEK293T