

Datasheet for ABIN2791194
anti-C14ORF159 antibody (C-Term)[Go to Product page](#)

1 Image

Overview

Quantity:	100 µL
Target:	C14ORF159
Binding Specificity:	C-Term
Reactivity:	Human, Horse, Mouse, Rat, Zebrafish (Danio rerio)
Host:	Rabbit
Clonality:	Polyclonal
Conjugate:	This C14ORF159 antibody is un-conjugated
Application:	Western Blotting (WB)

Product Details

Immunogen:	The immunogen is a synthetic peptide directed towards the C-terminal region of Human C14orf159
Sequence:	AKKIPGISST GVGDGGNELG MGKVKEAVRR HIRHGDVIAC DVEADFAVIA
Predicted Reactivity:	Horse: 100%, Human: 100%, Mouse: 100%, Rat: 100%, Zebrafish: 79%
Characteristics:	This is a rabbit polyclonal antibody against C14orf159. It was validated on Western Blot.
Purification:	Affinity Purified

Target Details

Target:	C14ORF159
Alternative Name:	C14orf159 (C14ORF159 Products)

Target Details

Background:	The function of this protein remains unknown. Protein Interaction Partner: PSMA3, APP, Protein Size: 579
-------------	--

Molecular Weight:	63 kDa
-------------------	--------

Gene ID:	80017
----------	-------

Application Details

Restrictions:	For Research Use only
---------------	-----------------------

Handling

Format:	Liquid
---------	--------

Concentration:	1 mg/mL
----------------	---------

Buffer:	Liquid. Purified antibody supplied in 1x PBS buffer with 0.09 % (w/v) sodium azide and 2 % sucrose.
---------	---

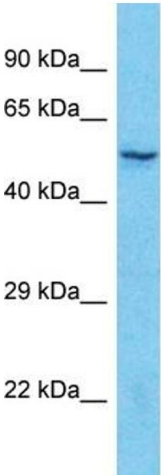
Preservative:	Sodium azide
---------------	--------------

Precaution of Use:	This product contains Sodium azide: a POISONOUS AND HAZARDOUS SUBSTANCE which should be handled by trained staff only.
--------------------	--

Handling Advice:	Avoid repeat freeze-thaw cycles.
------------------	----------------------------------

Storage:	-20 °C
----------	--------

Storage Comment:	For short term use, store at 2-8°C up to 1 week. For long term storage, store at -20°C in small aliquots to prevent freeze-thaw cycles.
------------------	---



Host: Rabbit
Target Name: C14orf159
Sample Tissue: Jurkat Cell Lysate
Antibody Dilution: 1.0µg/ml

Western Blotting

Image 1. Host: Rabbit Target Name: C14orf159 Sample
Type: Jurkat Whole Cell lysates Antibody Dilution: 1.0ug/ml