



[Go to Product page](#)

Datasheet for ABIN2791210

## anti-AMMECR1-Like antibody (N-Term)

### 1 Image

#### Overview

Quantity:	100 µL
Target:	AMMECR1-Like (AMMECR1L)
Binding Specificity:	N-Term
Reactivity:	Human, Mouse, Rabbit, Rat, Cow, Dog, Guinea Pig, Horse
Host:	Rabbit
Clonality:	Polyclonal
Conjugate:	This AMMECR1-Like antibody is un-conjugated
Application:	Western Blotting (WB)

#### Product Details

Immunogen:	The immunogen is a synthetic peptide directed towards the N-terminal region of Human AMMECR1L
Sequence:	EPKLAAGCCG VKKPKLSGSG THSHGNQSTT VPGSSSGPLQ NHQHVDSSSG
Predicted Reactivity:	Cow: 100%, Dog: 100%, Guinea Pig: 86%, Horse: 100%, Human: 100%, Mouse: 100%, Rabbit: 93%, Rat: 93%
Characteristics:	This is a rabbit polyclonal antibody against AMMECR1L. It was validated on Western Blot.
Purification:	Affinity Purified

#### Target Details

Target:	AMMECR1-Like (AMMECR1L)
---------	-------------------------

## Target Details

---

Alternative Name:	AMMECR1L ( <a href="#">AMMECR1L Products</a> )
Background:	The function of this protein remains unknown. Alias Symbols: - Protein Interaction Partner: SRPK1, SRPK2, LNX1, ELAVL1, UBC, IKBKG, Protein Size: 310
Molecular Weight:	34 kDa
Gene ID:	83607
NCBI Accession:	<a href="#">NM_031445</a> , <a href="#">NP_113633</a>
UniProt:	<a href="#">Q6DCA0</a>

## Application Details

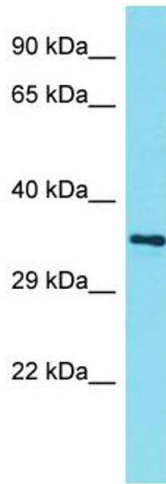
---

Application Notes:	Optimal working dilutions should be determined experimentally by the investigator.
Comment:	Antigen size: 310 AA
Restrictions:	For Research Use only

## Handling

---

Format:	Liquid
Concentration:	Lot specific
Buffer:	Liquid. Purified antibody supplied in 1x PBS buffer with 0.09 % (w/v) sodium azide and 2 % sucrose.
Preservative:	Sodium azide
Precaution of Use:	This product contains Sodium azide: a POISONOUS AND HAZARDOUS SUBSTANCE which should be handled by trained staff only.
Handling Advice:	Avoid repeated freeze-thaw cycles.
Storage:	-20 °C
Storage Comment:	For short term use, store at 2-8°C up to 1 week. For long term storage, store at -20°C in small aliquots to prevent freeze-thaw cycles.



### Western Blotting

**Image 1.** Host: Rabbit Target Name: AMMECR1L Sample Type: NCI-H226 Whole Cell lysates Antibody Dilution: 1.0ug/ml