

Datasheet for ABIN2791213
anti-SYDE2 antibody (C-Term)[Go to Product page](#)

1 Image

Overview

Quantity:	100 µL
Target:	SYDE2
Binding Specificity:	C-Term
Reactivity:	Human, Cow, Dog
Host:	Rabbit
Clonality:	Polyclonal
Conjugate:	This SYDE2 antibody is un-conjugated
Application:	Western Blotting (WB)

Product Details

Immunogen:	The immunogen is a synthetic peptide directed towards the C-terminal region of Human SYDE2
Sequence:	KENLNDVDYD DVPSEDRKIG ENYSKMDGPE VMIEQPIPMS KECTFQTYLT
Predicted Reactivity:	Cow: 85%, Dog: 85%, Human: 100%
Characteristics:	This is a rabbit polyclonal antibody against SYDE2. It was validated on Western Blot.
Purification:	Affinity Purified

Target Details

Target:	SYDE2
Alternative Name:	SYDE2 (SYDE2 Products)
Background:	SYDE2 is a GTPase activator for the Rho-type GTPases by converting them to an inactive GDP-

Target Details

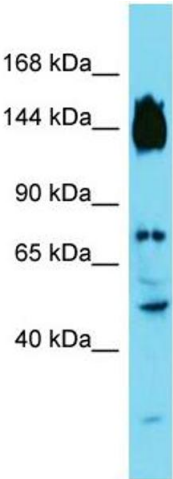
	bound state. Alias Symbols: RP11-33E12.1 Protein Interaction Partner: SUMO1, Protein Size: 1194
Molecular Weight:	133 kDa
Gene ID:	84144
NCBI Accession:	NM_032184 , NP_115560
UniProt:	Q5VT97

Application Details

Application Notes:	Optimal working dilutions should be determined experimentally by the investigator.
Comment:	Antigen size: 1194 AA
Restrictions:	For Research Use only

Handling

Format:	Liquid
Concentration:	Lot specific
Buffer:	Liquid. Purified antibody supplied in 1x PBS buffer with 0.09 % (w/v) sodium azide and 2 % sucrose.
Preservative:	Sodium azide
Precaution of Use:	This product contains Sodium azide: a POISONOUS AND HAZARDOUS SUBSTANCE which should be handled by trained staff only.
Handling Advice:	Avoid repeated freeze-thaw cycles.
Storage:	-20 °C
Storage Comment:	For short term use, store at 2-8°C up to 1 week. For long term storage, store at -20°C in small aliquots to prevent freeze-thaw cycles.



Western Blotting

Image 1. Host: Rabbit Target Name: SYDE2 Sample Type: Fetal Liver lysates Antibody Dilution: 1.0ug/ml