

Datasheet for ABIN2791224
anti-PLA2G12B antibody (N-Term)[Go to Product page](#)

1 Image

Overview

Quantity:	100 µL
Target:	PLA2G12B
Binding Specificity:	N-Term
Reactivity:	Human, Mouse, Rat, Cow, Dog, Horse, Pig
Host:	Rabbit
Clonality:	Polyclonal
Conjugate:	This PLA2G12B antibody is un-conjugated
Application:	Western Blotting (WB)

Product Details

Immunogen:	The immunogen is a synthetic peptide directed towards the N-terminal region of Human PLA2G12B
Sequence:	LVLWLSLGGG LAQSDTSPDT EESYSDWGLR HLRGSFESVN SYFDSFLELL
Predicted Reactivity:	Cow: 93%, Dog: 93%, Horse: 93%, Human: 100%, Mouse: 79%, Pig: 79%, Rat: 79%
Characteristics:	This is a rabbit polyclonal antibody against PLA2G12B. It was validated on Western Blot.
Purification:	Affinity Purified

Target Details

Target:	PLA2G12B
Alternative Name:	PLA2G12B (PLA2G12B Products)

Target Details

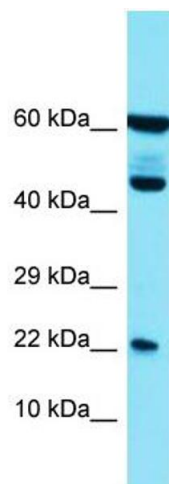
Background:	Phospholipase A2 (PLA2) enzymes catalyze hydrolysis of glycolipids to release free fatty acids and lysophospholipids. PLA2G12B belongs to the PLA2 family, but it is catalytically inactive due to an amino acid change in its active site and has altered phospholipid-binding properties. Alias Symbols: GXIIB, GXIIsPLA2, PLA2G13 Protein Size: 195
Molecular Weight:	19 kDa
Gene ID:	84647
NCBI Accession:	NM_032562 , NP_115951
UniProt:	Q9BX93

Application Details

Application Notes:	Optimal working dilutions should be determined experimentally by the investigator.
Comment:	Antigen size: 195 AA
Restrictions:	For Research Use only

Handling

Format:	Liquid
Concentration:	Lot specific
Buffer:	Liquid. Purified antibody supplied in 1x PBS buffer with 0.09 % (w/v) sodium azide and 2 % sucrose.
Preservative:	Sodium azide
Precaution of Use:	This product contains Sodium azide: a POISONOUS AND HAZARDOUS SUBSTANCE which should be handled by trained staff only.
Handling Advice:	Avoid repeated freeze-thaw cycles.
Storage:	-20 °C
Storage Comment:	For short term use, store at 2-8°C up to 1 week. For long term storage, store at -20°C in small aliquots to prevent freeze-thaw cycles.



Western Blotting

Image 1. Host: Rabbit Target Name: PLA2G12B Sample Type: HT1080 Whole Cell lysates Antibody Dilution: 1.0ug/ml