



Datasheet for ABIN2791225

anti-Family with Sequence Similarity 220, Member A (FAM220A) (Middle Region) antibody



[Go to Product page](#)

1 Image

Overview

Quantity:	100 µL
Target:	Family with Sequence Similarity 220, Member A (FAM220A)
Binding Specificity:	Middle Region
Reactivity:	Human
Host:	Rabbit
Clonality:	Polyclonal
Conjugate:	Un-conjugated
Application:	Western Blotting (WB)

Product Details

Immunogen:	The immunogen is a synthetic peptide directed towards the middle region of Human FAM220A
Sequence:	ATPSTAVGLF PAPTECFARV SCSGVEALGR RDWLGGGPRA TDGHRGQCPK
Predicted Reactivity:	Human: 100%
Characteristics:	This is a rabbit polyclonal antibody against FAM220A. It was validated on Western Blot.
Purification:	Affinity Purified

Target Details

Target:	Family with Sequence Similarity 220, Member A (FAM220A)
Alternative Name:	FAM220A (FAM220A Products)
Background:	FAM220A may negatively regulate STAT3.

Target Details

Alias Symbols: C7orf70, SIPAR

Protein Size: 259

Molecular Weight: 28 kDa

Gene ID: 84792

NCBI Accession: [NM_001037163](#), [NP_001032240](#)

UniProt: [Q7Z4H9](#)

Application Details

Application Notes: Optimal working dilutions should be determined experimentally by the investigator.

Comment: Antigen size: 259 AA

Restrictions: For Research Use only

Handling

Format: Liquid

Concentration: Lot specific

Buffer: Liquid. Purified antibody supplied in 1x PBS buffer with 0.09 % (w/v) sodium azide and 2 % sucrose.

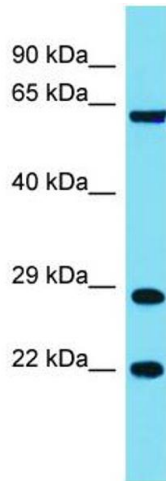
Preservative: Sodium azide

Precaution of Use: This product contains Sodium azide: a POISONOUS AND HAZARDOUS SUBSTANCE which should be handled by trained staff only.

Handling Advice: Avoid repeated freeze-thaw cycles.

Storage: -20 °C

Storage Comment: For short term use, store at 2-8°C up to 1 week. For long term storage, store at -20°C in small aliquots to prevent freeze-thaw cycles.



Western Blotting

Image 1. Host: Rabbit Target Name: FAM220A Sample Type: COLO205 Whole Cell lysates Antibody Dilution: 1.0ug/ml