

Datasheet for ABIN2791227
anti-C1ORF198 antibody (C-Term)



[Go to Product page](#)

1 Image

Overview

Quantity:	100 µL
Target:	C1ORF198
Binding Specificity:	C-Term
Reactivity:	Human, Cow, Dog, Rabbit, Rat
Host:	Rabbit
Clonality:	Polyclonal
Conjugate:	This C1ORF198 antibody is un-conjugated
Application:	Western Blotting (WB)

Product Details

Immunogen:	The immunogen is a synthetic peptide directed towards the C-terminal region of Human C1orf198
Sequence:	LPPCYRQEPA PKDREAKVER PSTLRQEQRP LPNVSTERER PQPVQAFSSA
Predicted Reactivity:	Cow: 77%, Dog: 79%, Human: 100%, Rabbit: 79%, Rat: 91%
Characteristics:	This is a rabbit polyclonal antibody against C1orf198. It was validated on Western Blot.
Purification:	Affinity Purified

Target Details

Target:	C1ORF198
Alternative Name:	C1orf198 (C1ORF198 Products)

Target Details

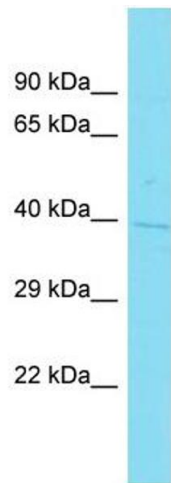
Background:	The function of this protein remains unknown. Alias Symbols: - Protein Interaction Partner: UBC, ELAVL1, Protein Size: 327
Molecular Weight:	36 kDa
Gene ID:	84886
NCBI Accession:	NM_032800 , NP_116189
UniProt:	Q9H425

Application Details

Application Notes:	Optimal working dilutions should be determined experimentally by the investigator.
Comment:	Antigen size: 327 AA
Restrictions:	For Research Use only

Handling

Format:	Liquid
Concentration:	Lot specific
Buffer:	Liquid. Purified antibody supplied in 1x PBS buffer with 0.09 % (w/v) sodium azide and 2 % sucrose.
Preservative:	Sodium azide
Precaution of Use:	This product contains Sodium azide: a POISONOUS AND HAZARDOUS SUBSTANCE which should be handled by trained staff only.
Handling Advice:	Avoid repeated freeze-thaw cycles.
Storage:	-20 °C
Storage Comment:	For short term use, store at 2-8°C up to 1 week. For long term storage, store at -20°C in small aliquots to prevent freeze-thaw cycles.



Western Blotting

Image 1. Host: Rabbit Target Name: C1orf198 Sample Type: NCI-H226 Whole Cell lysates Antibody Dilution: 1.0ug/ml