

Datasheet for ABIN2791230
anti-C9orf100 antibody (C-Term)[Go to Product page](#)

1 Image

Overview

Quantity:	100 µL
Target:	C9orf100
Binding Specificity:	C-Term
Reactivity:	Human, Horse, Cow, Dog, Guinea Pig, Mouse, Pig, Rabbit, Rat
Host:	Rabbit
Clonality:	Polyclonal
Conjugate:	This C9orf100 antibody is un-conjugated
Application:	Western Blotting (WB)

Product Details

Immunogen:	The immunogen is a synthetic peptide directed towards the C-terminal region of Human ARHGEF39
Sequence:	PNSPDHQQLT RAARLISETA QRVHTIGQKQ KNDQHLRRVQ ALLSGRQAKG
Predicted Reactivity:	Cow: 92%, Dog: 79%, Guinea Pig: 93%, Horse: 100%, Human: 100%, Mouse: 85%, Pig: 100%, Rabbit: 86%, Rat: 93%
Characteristics:	This is a rabbit polyclonal antibody against ARHGEF39. It was validated on Western Blot.
Purification:	Affinity Purified

Target Details

Target:	C9orf100
---------	----------

Target Details

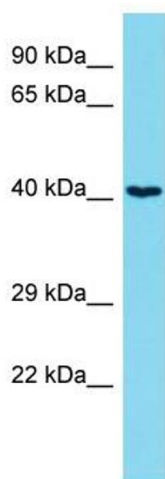
Alternative Name:	ARHGEF39 (C9orf100 Products)
Background:	ARHGEF39 is a Guanine nucleotide exchange factor. Alias Symbols: RP11-331F9.7 Protein Interaction Partner: TIFA, CALCOCO2, UBC, RBPMS, DVL2, Protein Size: 335
Molecular Weight:	38 kDa
Gene ID:	84904
NCBI Accession:	NM_032818 , NP_116207
UniProt:	Q8N4T4

Application Details

Application Notes:	Optimal working dilutions should be determined experimentally by the investigator.
Comment:	Antigen size: 335 AA
Restrictions:	For Research Use only

Handling

Format:	Liquid
Concentration:	Lot specific
Buffer:	Liquid. Purified antibody supplied in 1x PBS buffer with 0.09 % (w/v) sodium azide and 2 % sucrose.
Preservative:	Sodium azide
Precaution of Use:	This product contains Sodium azide: a POISONOUS AND HAZARDOUS SUBSTANCE which should be handled by trained staff only.
Handling Advice:	Avoid repeated freeze-thaw cycles.
Storage:	-20 °C
Storage Comment:	For short term use, store at 2-8°C up to 1 week. For long term storage, store at -20°C in small aliquots to prevent freeze-thaw cycles.



Western Blotting

Image 1. Host: Rabbit Target Name: ARHGEF39 Sample Type: Jurkat Whole Cell lysates Antibody Dilution: 1.0ug/ml