

Datasheet for ABIN2791233
anti-FAM222A antibody (N-Term)



[Go to Product page](#)

1 Image

Overview

Quantity:	100 µL
Target:	FAM222A
Binding Specificity:	N-Term
Reactivity:	Human, Cow, Dog, Guinea Pig, Mouse, Rabbit, Rat, Zebrafish (Danio rerio), Horse
Host:	Rabbit
Clonality:	Polyclonal
Conjugate:	This FAM222A antibody is un-conjugated
Application:	Western Blotting (WB)

Product Details

Immunogen:	The immunogen is a synthetic peptide directed towards the N-terminal region of Human FAM222A
Sequence:	SRTVNGYDTS GQRYSPYPQH TAGYQGLLAI VKAAVSSSST AAPAGPAKSV
Predicted Reactivity:	Cow: 100%, Dog: 93%, Guinea Pig: 100%, Horse: 86%, Human: 100%, Mouse: 100%, Rabbit: 100%, Rat: 100%, Zebrafish: 93%
Characteristics:	This is a rabbit polyclonal antibody against FAM222A. It was validated on Western Blot.
Purification:	Affinity Purified

Target Details

Target:	FAM222A
---------	---------

Target Details

Alternative Name: [FAM222A \(FAM222A Products\)](#)

Background: The function of this protein remains unknown.
Alias Symbols: C12orf34
Protein Interaction Partner: NLK,
Protein Size: 452

Molecular Weight: 46 kDa

Gene ID: 84915

NCBI Accession: [NM_032829, NP_116218](#)

UniProt: [Q5U5X8](#)

Application Details

Application Notes: Optimal working dilutions should be determined experimentally by the investigator.

Comment: Antigen size: 452 AA

Restrictions: For Research Use only

Handling

Format: Liquid

Concentration: Lot specific

Buffer: Liquid. Purified antibody supplied in 1x PBS buffer with 0.09 % (w/v) sodium azide and 2 % sucrose.

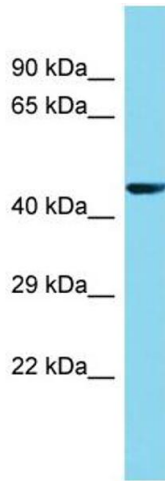
Preservative: Sodium azide

Precaution of Use: This product contains Sodium azide: a POISONOUS AND HAZARDOUS SUBSTANCE which should be handled by trained staff only.

Handling Advice: Avoid repeated freeze-thaw cycles.

Storage: -20 °C

Storage Comment: For short term use, store at 2-8°C up to 1 week. For long term storage, store at -20°C in small aliquots to prevent freeze-thaw cycles.



Western Blotting

Image 1. Host: Rabbit Target Name: FAM222A Sample Type: 293T Whole Cell lysates Antibody Dilution: 1.0ug/ml