

Datasheet for ABIN2791238
anti-TMEM241 antibody (C-Term)[Go to Product page](#)

1 Image

Overview

Quantity:	100 µL
Target:	TMEM241
Binding Specificity:	C-Term
Reactivity:	Human, Cow, Dog
Host:	Rabbit
Clonality:	Polyclonal
Conjugate:	This TMEM241 antibody is un-conjugated
Application:	Western Blotting (WB)

Product Details

Immunogen:	The immunogen is a synthetic peptide directed towards the C-terminal region of Human TMEM241
Sequence:	YFWAIHLLC VGAYKILQKS QKPSALSDID QQYLNIFYFSV VLLAFASHPT
Predicted Reactivity:	Cow: 100%, Dog: 79%, Human: 100%
Characteristics:	This is a rabbit polyclonal antibody against TMEM241. It was validated on Western Blot.
Purification:	Affinity Purified

Target Details

Target:	TMEM241
Alternative Name:	TMEM241 (TMEM241 Products)

Target Details

Background: The function of this protein remains unknown.
Alias Symbols: C18orf45, hVVT
Protein Interaction Partner: KRT40, ELAVL1, MDFI,
Protein Size: 296

Molecular Weight: 32 kDa

Gene ID: 85019

NCBI Accession: [NM_032933](#), [NP_116322](#)

UniProt: [Q24JQ0](#)

Application Details

Application Notes: Optimal working dilutions should be determined experimentally by the investigator.

Comment: Antigen size: 296 AA

Restrictions: For Research Use only

Handling

Format: Liquid

Concentration: Lot specific

Buffer: Liquid. Purified antibody supplied in 1x PBS buffer with 0.09 % (w/v) sodium azide and 2 % sucrose.

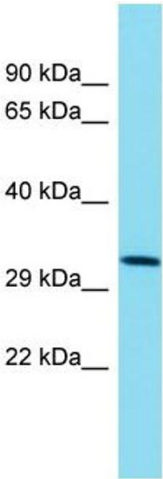
Preservative: Sodium azide

Precaution of Use: This product contains Sodium azide: a POISONOUS AND HAZARDOUS SUBSTANCE which should be handled by trained staff only.

Handling Advice: Avoid repeated freeze-thaw cycles.

Storage: -20 °C

Storage Comment: For short term use, store at 2-8°C up to 1 week. For long term storage, store at -20°C in small aliquots to prevent freeze-thaw cycles.



Western Blotting

Image 1. Host: Rabbit Target Name: TMEM241 Sample Type: NCI-H226 Whole Cell lysates Antibody Dilution: 1.0ug/ml