

Datasheet for ABIN2791244
anti-KNSTRN antibody (Middle Region)[Go to Product page](#)

1 Image

Overview

Quantity:	100 µL
Target:	KNSTRN
Binding Specificity:	Middle Region
Reactivity:	Human, Mouse, Rat, Cow, Dog, Guinea Pig, Horse, Rabbit, Saccharomyces cerevisiae
Host:	Rabbit
Clonality:	Polyclonal
Conjugate:	This KNSTRN antibody is un-conjugated
Application:	Western Blotting (WB)

Product Details

Immunogen:	The immunogen is a synthetic peptide directed towards the middle region of Human C15orf23
Sequence:	TDTATRRNVR KGYKPLSKQK SEEELKDKNQ LLEAVNKQLH QKLTETQGEL
Predicted Reactivity:	Cow: 100%, Dog: 100%, Guinea Pig: 100%, Horse: 100%, Human: 100%, Mouse: 85%, Rabbit: 100%, Rat: 79%, Yeast: 82%
Characteristics:	This is a rabbit polyclonal antibody against C15orf23. It was validated on Western Blot.
Purification:	Affinity Purified

Target Details

Target:	KNSTRN
Alternative Name:	C15orf23 (KNSTRN Products)

Target Details

Background:	<p>C15orf23 is an essential component of the mitotic spindle required for faithful chromosome segregation and progression into anaphase. It promotes the metaphase-to-anaphase transition and is required for chromosome alignment, normal timing of sister chromatid segregation, and maintenance of spindle pole architecture. The astrin (SPAG5)-kinastrin (SKAP) complex promotes stable microtubule-kinetochore attachments.</p> <p>Alias Symbols: SKAP, TRAF4AF1, C15orf23</p> <p>Protein Interaction Partner: UBC, CLU, CHMP1B, MAPK6, Cep152, Cep55, Dynl11, Mad2l1, Spag5, Knstrn, Plk1, MPHOSPH6, MPP6,</p> <p>Protein Size: 316</p>
Molecular Weight:	35 kDa
Gene ID:	90417
NCBI Accession:	NM_033286 , NP_150628
UniProt:	Q9Y448
Pathways:	M Phase

Application Details

Application Notes:	Optimal working dilutions should be determined experimentally by the investigator.
Comment:	Antigen size: 316 AA
Restrictions:	For Research Use only

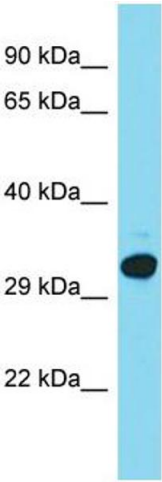
Handling

Format:	Liquid
Concentration:	Lot specific
Buffer:	Liquid. Purified antibody supplied in 1x PBS buffer with 0.09 % (w/v) sodium azide and 2 % sucrose.
Preservative:	Sodium azide
Precaution of Use:	This product contains Sodium azide: a POISONOUS AND HAZARDOUS SUBSTANCE which should be handled by trained staff only.
Handling Advice:	Avoid repeated freeze-thaw cycles.
Storage:	-20 °C

Handling

Storage Comment: For short term use, store at 2-8°C up to 1 week. For long term storage, store at -20°C in small aliquots to prevent freeze-thaw cycles.

Images



Western Blotting

Image 1. Host: Rabbit Target Name: C15orf23 Sample Type: HepG2 Whole Cell lysates Antibody Dilution: 1.0ug/ml