

Datasheet for ABIN2791249
anti-STPG1 antibody (C-Term)



[Go to Product page](#)

1 Image

Overview

Quantity:	100 µL
Target:	STPG1
Binding Specificity:	C-Term
Reactivity:	Human, Rat, Cow, Guinea Pig, Horse, Rabbit
Host:	Rabbit
Clonality:	Polyclonal
Conjugate:	This STPG1 antibody is un-conjugated
Application:	Western Blotting (WB)

Product Details

Immunogen:	The immunogen is a synthetic peptide directed towards the C-terminal region of Human STPG1
Sequence:	SCFKSKTRNG LKLTSTGPGP GYNPSTDCTK VPKKTLFPKN PILNFSAQPS
Predicted Reactivity:	Cow: 93%, Guinea Pig: 86%, Horse: 93%, Human: 100%, Rabbit: 86%, Rat: 91%
Characteristics:	This is a rabbit polyclonal antibody against STPG1. It was validated on Western Blot.
Purification:	Affinity Purified

Target Details

Target:	STPG1
Alternative Name:	STPG1 (STPG1 Products)
Background:	The function of this protein remains unknown.

Target Details

Alias Symbols: -

Protein Size: 287

Molecular Weight: 31 kDa

Gene ID: 90529

NCBI Accession: [NM_178122](#), [NP_835223](#)

Application Details

Application Notes: Optimal working dilutions should be determined experimentally by the investigator.

Comment: Antigen size: 287 AA

Restrictions: For Research Use only

Handling

Format: Liquid

Concentration: Lot specific

Buffer: Liquid. Purified antibody supplied in 1x PBS buffer with 0.09 % (w/v) sodium azide and 2 % sucrose.

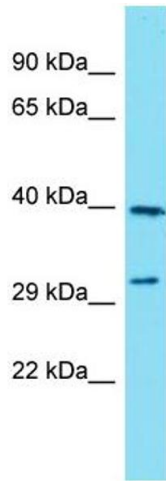
Preservative: Sodium azide

Precaution of Use: This product contains Sodium azide: a POISONOUS AND HAZARDOUS SUBSTANCE which should be handled by trained staff only.

Handling Advice: Avoid repeated freeze-thaw cycles.

Storage: -20 °C

Storage Comment: For short term use, store at 2-8°C up to 1 week. For long term storage, store at -20°C in small aliquots to prevent freeze-thaw cycles.



Western Blotting

Image 1. Host: Rabbit Target Name: STPG1 Sample Type: ACHN Whole cell lysates Antibody Dilution: 1.0ug/ml