

Datasheet for ABIN2791254  
**anti-CCDC149 antibody (C-Term)**[Go to Product page](#)

## 1 Image

## Overview

Quantity:	100 µL
Target:	CCDC149
Binding Specificity:	C-Term
Reactivity:	Human, Guinea Pig, Horse, Pig
Host:	Rabbit
Clonality:	Polyclonal
Conjugate:	This CCDC149 antibody is un-conjugated
Application:	Western Blotting (WB)

## Product Details

Immunogen:	The immunogen is a synthetic peptide directed towards the C-terminal region of Human CCDC149
Sequence:	LLKFVEQPTE NKADPKDGEA QKQEEDESCA AAEALTAPED AGRPAVNSPA
Predicted Reactivity:	Guinea Pig: 79%, Horse: 86%, Human: 100%, Pig: 86%
Characteristics:	This is a rabbit polyclonal antibody against CCDC149. It was validated on Western Blot.
Purification:	Affinity Purified

## Target Details

Target:	CCDC149
Alternative Name:	CCDC149 ( <a href="#">CCDC149 Products</a> )

## Target Details

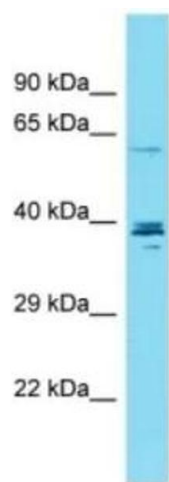
Background:	The function of this protein remains unknown. Alias Symbols: - Protein Interaction Partner: APP, PRNP, UBC, Protein Size: 529
Molecular Weight:	58 kDa
Gene ID:	91050
NCBI Accession:	<a href="#">NM_173463</a> , <a href="#">NP_775734</a>

## Application Details

Restrictions:	For Research Use only
---------------	-----------------------

## Handling

Format:	Liquid
Concentration:	1 mg/mL
Buffer:	Liquid. Purified antibody supplied in 1x PBS buffer with 0.09 % (w/v) sodium azide and 2 % sucrose.
Preservative:	Sodium azide
Precaution of Use:	This product contains Sodium azide: a POISONOUS AND HAZARDOUS SUBSTANCE which should be handled by trained staff only.
Handling Advice:	Avoid repeat freeze-thaw cycles.
Storage:	-20 °C
Storage Comment:	For short term use, store at 2-8°C up to 1 week. For long term storage, store at -20°C in small aliquots to prevent freeze-thaw cycles.



Western Blotting

**Image 1.** Host: Rabbit , Target: CCDC149, Sample Type: OVCAR-3 Whole Cell Lysates, Antibody Dilution: 1.0ug/ml